

GALLOWS HILL

Old Cooper House (1657)

Love Lane

CAMBRIDGE

COMMON

Sewall

Hill

Mrs. Vassall

Christ Church

COLLEGES

Borland

Dana

Stedman's Tavern

BUTLER'S HILL

SIMON'S HILL

LITTLE NECK

SODEN'S CREEK

GREAT NECK

HARVARD UNIVERSITY
FACT BOOK
2010-11

ORGANIZATION	Pages
Central Administration	2
Faculties and Allied Institutions	3
Research and Academic Centers	4 – 5

PEOPLE	Pages
Degree Student Enrollment	6 – 9
Degrees Conferred	10 – 14
International Students	15 – 16
Summer School and Non-Degree Students	17
Faculty and Staff	18 – 21

RESOURCES	Pages
Tuition, Fees, and Financial Aid	22 – 24
Sponsored Programs	25 – 29
Library	30 – 31
Physical Plant	32 – 33
Environmental Performance	34 – 38
Income and Expenses	39 – 41
Endowment	42 – 43
Endnote	44

The Harvard University Fact Book is published annually by:
The Office of Institutional Research
Holyoke Center, Suite 780
Cambridge, MA 02138

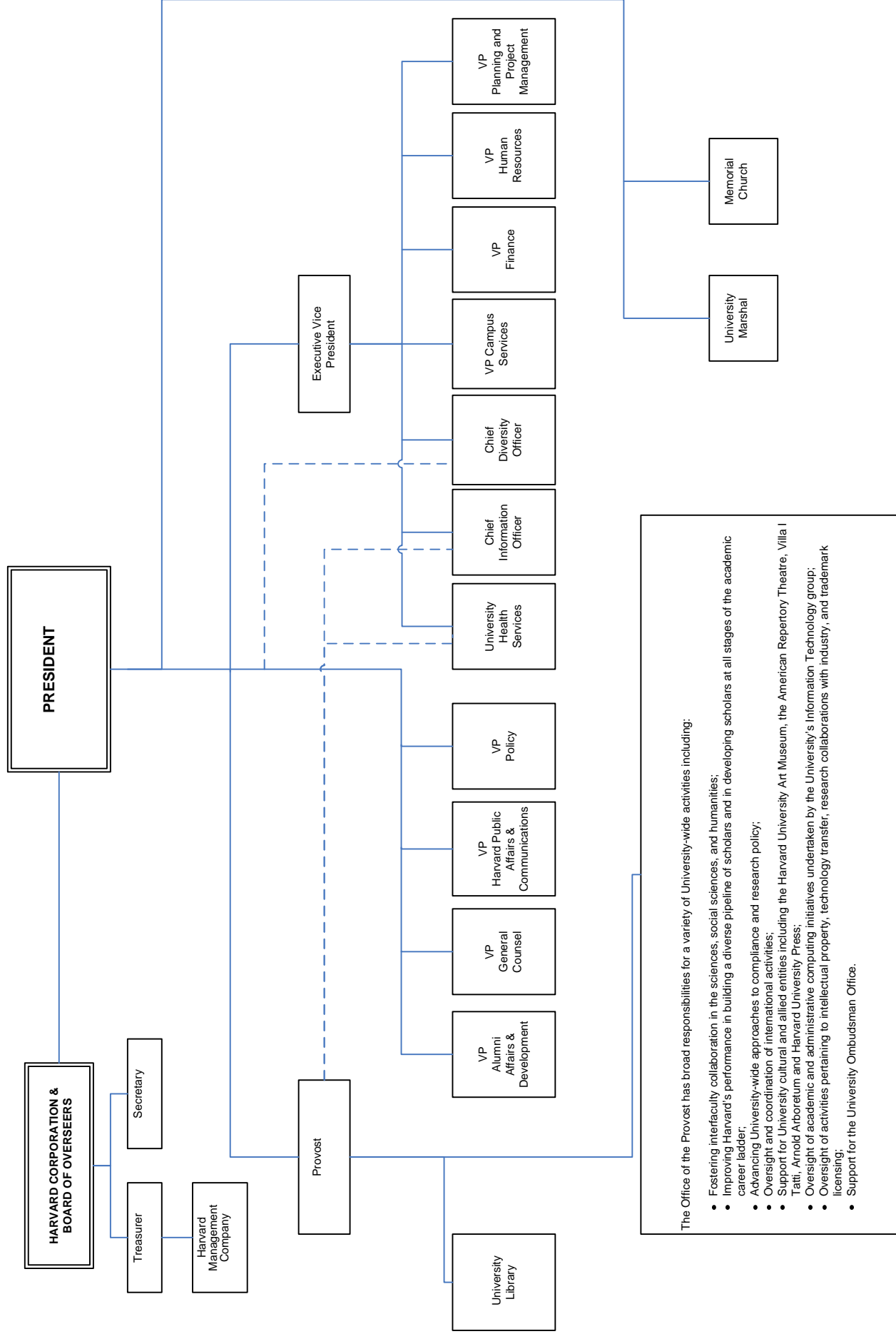
The address for the electronic version is:
http://www.provost.harvard.edu/institutional_research/factbook.php

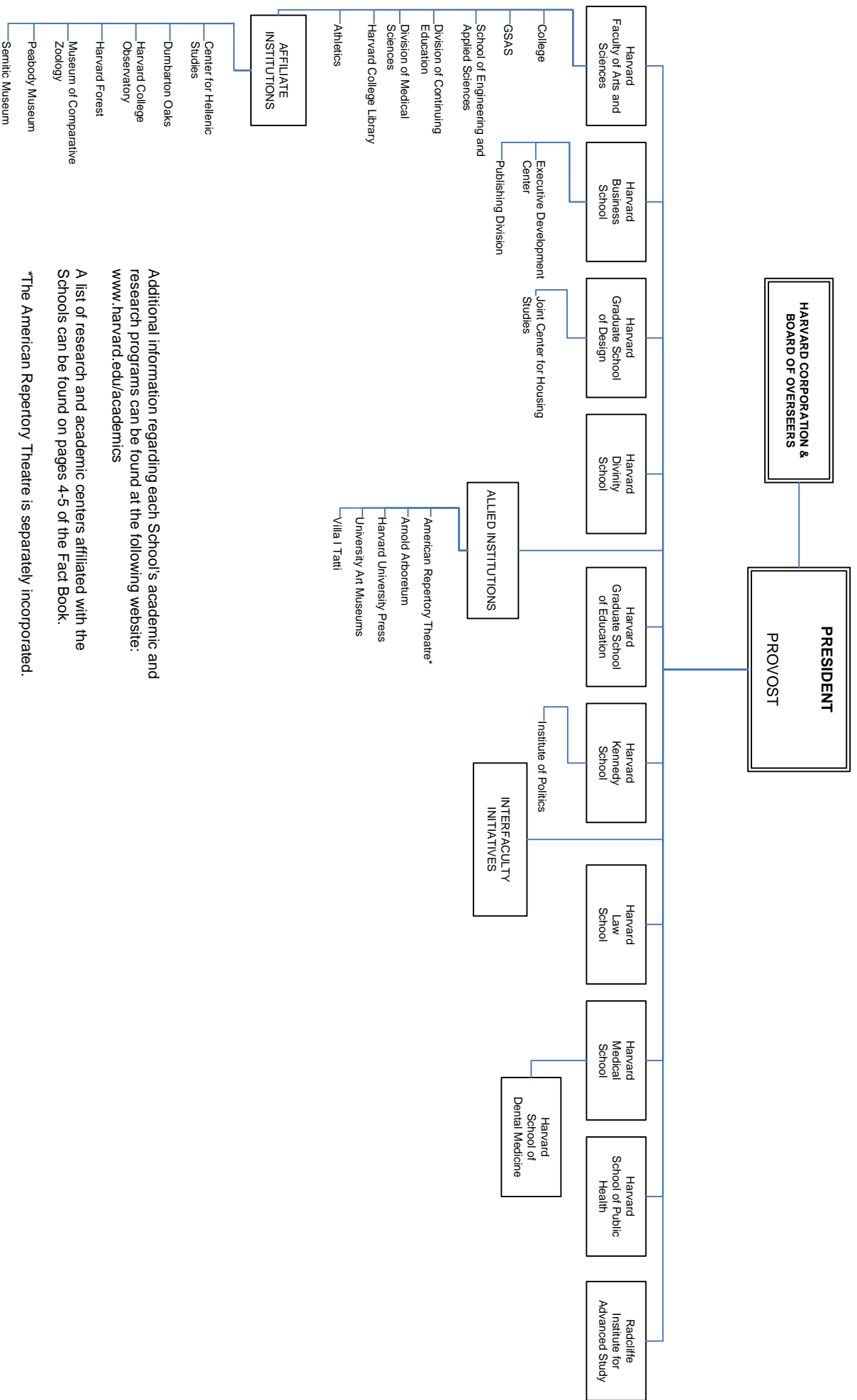
If you would like more information about data contained in the Fact Book, contact:

John Scanlon, Senior Data and Reporting Analyst
(617) 495-0591, E-mail: john_scanlon@harvard.edu
James Ward, Data and Reporting Coordinator
(617) 496-3873, E-mail: james_ward@harvard.edu

Changes to content after hard copy publication are reflected on the web version of the Fact Book.

Copyright 2011 by the President and Fellows of Harvard College





Additional information regarding each School's academic and research programs can be found at the following website:
www.harvard.edu/academics

A list of research and academic centers affiliated with the Schools can be found on pages 4-5 of the Fact Book.

*The American Repertory Theatre is separately incorporated.

Harvard University Research and Academic Centers

FACULTY of ARTS and SCIENCES

Aga Khan Program for Islamic Architecture
 Carpenter Center for the Visual Arts
 Center for American Political Studies
 Center for Brain Science*
 Center for Hellenic Studies
 Center for Jewish Studies
 Center for Middle Eastern Studies
 Center for Nanoscale Systems
 Center for Systems Biology
 Davis Center for Russian and Eurasian Studies
 W.E.B. Du Bois Institute for African and African-American
 Research
 Dumbarton Oaks
 Fairbank Center for Chinese Studies
 Film Study Center
 Minda de Gunzburg Center for European Studies
 Harvard College Observatory
 Harvard Forest
 Harvard Smithsonian Center for Astrophysics
 Harvard University Asia Center***
 Harvard University Center for the Environment***
 Harvard University Committee on African Studies***
 Harvard-Yenching Institute
 Institute for Quantitative Social Science***
 Center for Geographic Analysis⁽¹⁾
 Harvard-MIT Data Center⁽¹⁾
 Institute for Theory and Computation
 Korea Institute
 Mahindra Humanities Center***
 Program for Evolutionary Dynamics
 Edwin O. Reischauer Institute of Japanese Studies
 David Rockefeller Center for Latin American Studies***
 South Asia Initiative at Harvard***
 Prince Alwaleed Bin Talal Islamic Studies Program***
 Ukrainian Research Institute
 Charles Warren Center for Studies in American History
 Weatherhead Center for International Affairs
 Harvard Academy for International and Area Studies⁽²⁾
 Program on U.S. - Japan Relations⁽²⁾

BUSINESS

C. Roland Christensen Center for Teaching and Learning
 Global Initiative
 Asia-Pacific Research Center
 Europe Research Center
 India Research Center
 Japan Research Center
 Latin America Research Center
 Harvard Center Shanghai**
 Harvard Innovation Lab**
 Healthcare Initiative
 Institute for Strategy and Competitiveness*
 Leadership Initiative

BUSINESS (cont.)

Arthur M. Rock Center for Entrepreneurship
 California Research Center
 Social Enterprise Initiative

DESIGN

Aga Khan Program at the Graduate School of Design
 Joint Center for Housing Studies*
 Real Estate Academic Initiative***
 Research Advancement Initiative

DIVINITY

Center for the Study of World Religions
 Women's Studies in Religion Program

EDUCATION

Achievement Gap Initiative*
 Center for Education Policy Research
 Collaborative on Academic Careers in Higher Education
 Executive Leadership Program for Educators at Harvard
 University (ExEL)*
 Harvard Family Research Project
 Programs in Professional Education/The Principals'
 Center
 Project Zero
 Public Education Leadership Project*
 Three-to-Third
 WIDE World⁽³⁾

ENGINEERING AND APPLIED SCIENCES

Center for Research on Computation and Society
 Institute for Quantum Science and Engineering
 Kavli Institute for Bionano Science and Engineering
 Materials Research Science and Engineering Center
 Nanoscale Science and Engineering Center⁽⁴⁾
 Rowland Institute

GOVERNMENT

Roy and Lila Ash Center for Democratic Governance
 and Innovation
 Robert and Renee Belfer Center for Science and
 International Affairs
 Carr Center for Human Rights Policy
 Center for International Development **
 Center for Public Leadership
 Harvard Environmental Economics Program**
 Hauser Center for Nonprofit Organizations**
 Institute of Politics
 Joint Center for Housing Studies*
 Mossavar-Rahmani Center for Business and
 Government
 Rappaport Institute for Greater Boston
 Joan Shorenstein Center on the Press, Politics and
 Public Policy

(1) These Programs are housed and administered within the Institute for Quantitative Social Science.

(2) These Programs are housed and administered within the Weatherhead Center.

(3) WIDE is the Wide-scale Interactive Development for Educators.

(4) The Nanoscale Science and Engineering Center is a joint program with M.I.T., U.C.S.B., and the Boston Museum of Science.

* These Programs represent collaborations between two or more Schools.

** These Programs are housed in particular Schools and report to a dean, but have been granted University-Wide Status.

*** These initiatives have a joint reporting structure to the Provost and to the dean of their home School.

SOURCE: SCHOOLS, OFFICE OF THE PROVOST

Harvard University Research and Academic Centers

GOVERNMENT (cont.)

A. Alfred Taubman Center for State and Local Government
 Malcolm Wiener Center for Social Policy
 Women and Public Policy Program

MEDICINE

Center for Biomedical Informatics
 Center for Genetics and Genomics, Harvard Medical School-
 Partners Healthcare*
 Center for Health and the Global Environment
 Center for Hereditary Deafness*
 Center for Immunodeficiency
 Center for Integration of Medicine and Innovative Technology
 Center for Magnetic Resonance*
 Center for Mental Health and Media*
 Center for Neurofibromatosis and Allied Disorders*
 Center for Palliative Care
 Center for Primary Care
 Dana Farber/Harvard Cancer Center*
 Division for Research and Education in
 Complementary and Integrative Medical Therapies
 Division of AIDS*
 Division of Emergency Medicine
 Division of Health Policy Research and Education*
 Division of Health Sciences and Technology
 Division of Medical Ethics*
 Division of Nutrition*
 Division of Service Learning
 Division of Sleep Medicine
 Harvard Catalyst: The Harvard Clinical and Translational
 Science Center
 Harvard Clinical Research Institute
 Harvard-Mahoney Neuroscience Institute*
 Harvard NeuroDiscovery Center
 Harvard Skin Disease Research Center
 Institute of Chemistry and Cell Biology – Longwood Screening
 Facility*
 Institute of Proteomics
 JDRF Center for Immunological Tolerance at Harvard⁽¹⁾
 New England Primate Research Center
 New England Regional Center of Excellence for Biodefense
 and Emerging Infectious Diseases*

LAW

Berkman Center for Internet and Society***
 Child Advocacy Program
 East Asian Legal Studies Program
 Environmental Law and Policy Program
 Foundations of Private Law
 Charles Hamilton Houston Institute for Race and Justice
 Human Rights Program
 Institute for Global Law and Policy
 Islamic Legal Studies Program
 Labor and Worklife Program
 Legal History Program

LAW (cont.)

John M. Olin Center for Law, Economics and Business
 Petrie-Flom Center for Health Law Policy, Biotechnology,
 and Ethics*
 Program on Corporate Governance
 Program on International Financial Systems
 Program on Negotiation
 Program on the Legal Profession
 Project on Disability
 Project on Law and Mind Sciences
 Edmond J. Safra Foundation Center for Ethics***
 Tax Law Program

PUBLIC HEALTH

Francois-Xavier Bagnoud Center for Health and Human
 Rights***
 Center for Health Communication
 Center for Health Decision Science
 Harvard Center for Population and Development Studies***
 Harvard Injury Control Center
 Harvard School of Public Health AIDS Initiative

RADCLIFFE INSTITUTE FOR ADVANCED STUDY

Radcliffe Institute Fellowship Program
 Arthur and Elizabeth Schlesinger Library on the History of
 Women in America

UNIVERSITY INTERFACULTY INITIATIVES⁽²⁾

Advanced Leadership Initiative
 Francois-Xavier Bagnoud Center for Health and Human
 Rights***
 Berkman Center for Internet and Society***
 Center on the Developing Child
 Harvard Center for Population and Development Studies***
 Harvard China Fund
 Harvard Humanitarian Initiative
 Harvard Global Health Institute
 Harvard Stem Cell Institute
 Harvard University Asia Center***
 Harvard University Center for the Environment***
 Harvard University Committee on African Studies***
 Harvard University Native American Program
 Institute for Quantitative Social Science***
 Mahindra Humanities Center***
 Microbial Sciences Initiative
 Mind/Brain/Behavior Initiative
 Origins of Life Initiative
 Program in Health Policy
 Real Estate Academic Initiative***
 David Rockefeller Center for Latin American Studies***
 Edmond J. Safra Foundation Center for Ethics***
 South Asia Initiative at Harvard***
 Prince Alwaleed Bin Talal Islamic Studies Program***
 Hansjörg Wyss Institute for Biologically Inspired Engineering

(1) JDRF is the Juvenile Diabetes Research Foundation.

(2) These Initiatives report to the Provost.

* These Programs represent collaborations between two or more Schools.

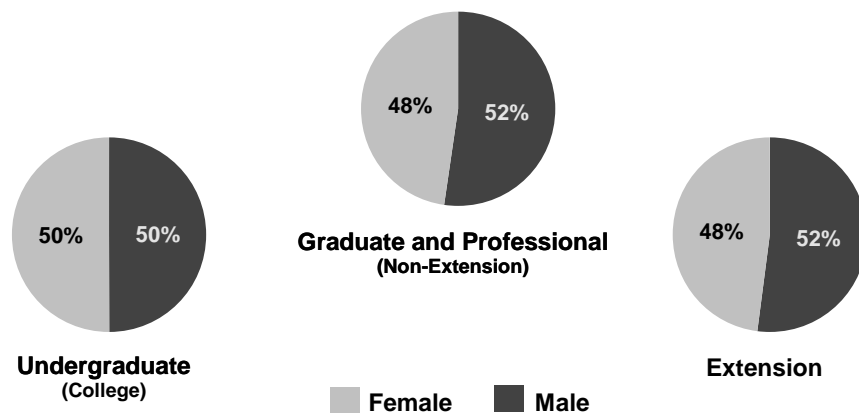
** These Programs are housed in particular Schools and report to a dean, but have been granted University-Wide status.

*** These initiatives have a joint reporting structure to the Provost and to the dean of their home School.

SOURCE: SCHOOLS, OFFICE OF THE PROVOST

Degree Student Head Count: Fall 2010
 Counts taken of October 15, 2010

	Male	Female	Total	Full-Time	Part-Time	Total
College ^(1,4)						
Freshmen	839	831	1,670	1,670	-	1,670
Sophomores	854	854	1,708	1,706	2	1,708
Juniors ⁽²⁾	792	839	1,631	1,628	3	1,631
Seniors	833	799	1,632	1,629	3	1,632
Subtotal	3,318	3,323	6,641	6,633	8	6,641
GSAS ^(3,4)						
Division of Medical Science	251	325	576	576	-	576
All Other	1,946	1,420	3,366	3,349	17	3,366
Subtotal	2,197	1,745	3,942	3,925	17	3,942
Business	1,218	694	1,912	1,912	-	1,912
Dental	116	133	249	249	-	249
Design	347	344	691	690	1	691
Divinity	171	191	362	350	12	362
Education	277	720	997	902	95	997
Government	535	385	920	892	28	920
Law	1,056	928	1,984	1,983	1	1,984
Medical	420	368	788	788	-	788
Public Health	286	528	814	648	166	814
Extension	1,004	925	1,929	402	1527	1,929
Undergraduate	324	290	614	276	338	614
Graduate	680	635	1,315	126	1189	1,315
Subtotal, All Degree Students	10,945	10,284	21,229	19,374	1,855	21,229
Adjustment for Joint Degree Students	(44)	(26)	(70)			(70)
TOTAL	10,901	10,258	21,159			21,159



(1) Students in the Advanced Standing Program are counted as Juniors in their second year and Seniors in their third and fourth year. College total excludes students who are studying abroad.
 (2) Counts for Juniors include 38 undergraduates unclassified by year.
 (3) Graduate School of Arts and Sciences. Candidates for the Ph.D. are enrolled in GSAS but may cross register for courses in other faculties.
 (4) GSAS and College include engineering students.

Historical Enrollments: Fall 2005 - 2010 ⁽¹⁾

Degree Student Head Count by School

Counts taken as of October 15

	2005	2006	2007	2008	2009	2010
College ^(2,4)	6,613	6,715	6,648	6,678	6,655	6,641
GSAS ^(3,4)	3,753	3,750	3,682	3,720	3,738	3,942
Business	1,851	1,855	1,854	1,852	1,911	1,912
Dental	240	243	250	210	245	249
Design	579	618	602	610	662	691
Divinity	423	439	453	433	384	362
Education	975	971	905	902	992	997
Government	944	1,029	930	940	967	920
Law	1,948	1,966	1,966	1,952	1,987	1,984
Medical	784	818	809	782	756	788
Public Health	787	771	797	834	831	814
Extension						
Undergraduate	389	385	433	478	526	614
Graduate	599	590	700	929	1,461	1,315
Subtotal, All Degree Students	19,885	20,150	20,029	20,320	21,115	21,229
Adjustment for Joint Degree Students	(58)	(65)	(72)	(74)	(98)	(70)
TOTAL	19,827	20,085	19,957	20,246	21,017	21,159
Enrollment Level ⁽⁵⁾	2005	2006	2007	2008	2009	2010
Undergraduates						
Full-Time	6,792	6,880	6,837	6,890	6,869	6,909
Part-Time	210	220	244	266	312	346
Subtotal	7,002	7,100	7,081	7,156	7,181	7,255
Graduate and Professional Students						
Full-Time	11,840	12,070	12,006	11,972	12,338	12,465
Part-Time	1,043	980	942	1,192	1,596	1,509
Subtotal	12,883	13,050	12,948	13,164	13,934	13,974
TOTAL	19,885	20,150	20,029	20,320	21,115	21,229

(1) Several Harvard schools enrolled students displaced by Hurricane Katrina during Fall 2005. These students are included in the counts for non-degree students on page 17.

(2) College totals exclude students who were studying abroad.

(3) Graduate School of Arts and Sciences. Candidates for the Ph.D. are enrolled in GSAS but may cross register for courses in other faculties.

(4) Counts for GSAS and College include engineering students.

(5) Includes degree candidates from the Extension School. Not adjusted for joint degree students.

SOURCE: REGISTRAR OFFICES

Student Enrollment by Degree: Fall 2010
 Counts taken as of October 15, 2010

		Male		Female		Total
		Full-Time	Part-Time	Full-Time	Part-Time	
College ⁽¹⁾	A.B., S.B.	3,317	1	3,316	7	6,641
GSAS ⁽²⁾	A.M., S.M., M.E.	73	10	60	7	150
	Ph.D.	2,114	-	1,678	-	3,792
Business	M.B.A.	1,192	-	668	-	1,860
	D.B.A.	26	-	26	-	52
Dental	D.M.D.	55	-	94	-	149
	M.M.Sc.	18	-	14	-	32
	D.M.Sc.	19	-	10	-	29
	Cert.	24	-	15	-	39
Design	M.Arch.	168	1	155	-	324
	M.A.U.D., M.L.A.U.D.	36	-	22	-	58
	M.Des.	58	-	33	-	91
	M.L.A.	42	-	88	-	130
	M.U.P.	25	-	33	-	58
	D.Des.	17	-	13	-	30
Divinity	M.Div.	54	1	87	4	146
	M.T.S.	85	5	80	2	172
	Th.M.	3	-	-	-	3
	Th.D.	23	-	18	-	41
Education	Ed.M.	147	24	450	53	674
	Ed.L.D.	9	-	16	-	25
	Ed.D.	88	8	188	10	294
	C.A.S.	1	-	3	-	4
Government	M.P.A. ⁽³⁾	214	9	116	3	342
	M.P.A.I.D.	70	-	56	2	128
	M.P.P.	224	8	186	6	424
	M.U.P.	1	-	5	-	6
	Ph.D.	9	-	11	-	20
Law	J.D.	898	-	828	-	1,726
	LL.M.	113	1	77	-	191
	S.J.D.	44	-	23	-	67
Medical	M.D.	378	-	346	-	724
	M.M.Sc.	42	-	22	-	64
Public Health	M.P.H.	76	29	96	57	258
	S.M.	55	31	156	22	264
	D.P.H.	3	-	3	3	9
	D.S.	85	7	174	17	283
Extension	A.A., A.L.B.	157	167	119	171	614
	A.L.M., Grad. Cert.	70	610	56	579	1,315
	TOTAL ⁽⁴⁾	10,033	912	9,341	943	21,229

(1) College total excludes students who are studying abroad and includes Engineering students.

(2) Graduate School of Arts and Sciences. Counts include Engineering students.

(3) M.P.A. Program includes the two-year M.P.A. program and the one-year M.P.A. Mid-Career program.

(4) Not adjusted for joint degree students.

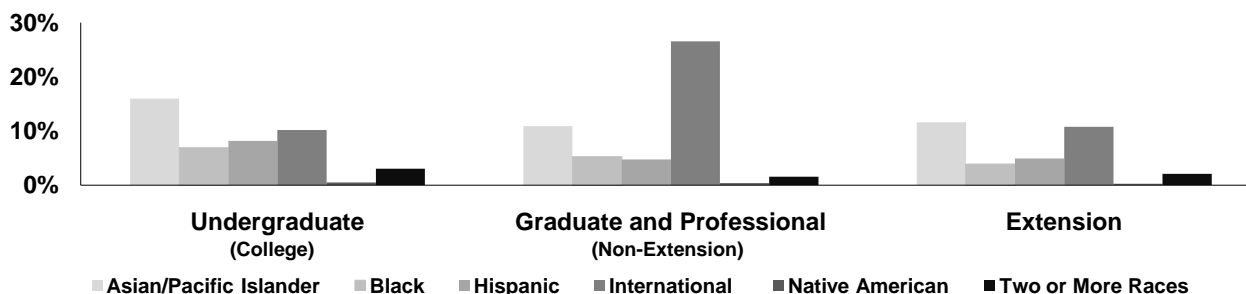
SOURCE: REGISTRAR OFFICES

Degree Student Enrollment by Ethnicity: Fall 2010

Counts taken as of October 15, 2010

	College	GSAS ⁽¹⁾	Business	Dental	Design	Divinity	Education	Government	Law	Medical	Public Health	Extension	Total
Asian/Pacific Islander													
Male	442	151	129	33	30	9	21	27	74	118	21	128	1,183
Female	619	188	97	44	57	10	73	37	101	98	56	95	1,475
Subtotal	1,061	339	226	77	87	19	94	64	175	216	77	223	2,658
Percent	16%	9%	12%	31%	13%	5%	9%	7%	9%	27%	9%	12%	12.5%
Black/Non-Hispanic													
Male	203	30	66	3	11	11	36	12	82	37	12	43	546
Female	254	64	31	-	6	13	64	18	103	34	33	32	652
Subtotal	457	94	97	3	17	24	100	30	185	71	45	75	1,198
Percent	7%	2%	5%	1%	2%	7%	10%	3%	9%	9%	6%	4%	5.6%
Hispanic													
Male	281	58	51	2	17	12	18	29	63	35	5	55	626
Female	261	48	21	6	16	16	60	23	67	33	22	40	613
Subtotal	542	106	72	8	33	28	78	52	130	68	27	95	1,239
Percent	8%	3%	4%	3%	5%	8%	8%	6%	7%	9%	3%	5%	5.8%
International Students													
Male	372	799	397	26	111	16	31	216	199	27	129	117	2,440
Female	303	511	237	23	102	21	78	135	143	20	139	90	1,802
Subtotal	675	1,310	634	49	213	37	109	351	342	47	268	207	4,242
Percent	10%	33%	33%	20%	31%	10%	11%	38%	17%	6%	33%	11%	20.0%
Native American													
Male	18	3	2	-	4	2	2	4	7	1	1	-	44
Female	13	1	2	1	1	-	2	4	3	1	2	5	35
Subtotal	31	4	4	1	5	2	4	8	10	2	3	5	79
Percent	0%	0%	0%	0%	1%	1%	0%	1%	1%	0%	0%	0%	0.4%
Two or More Races													
Male	71	27	6	2	5	3	12	2	5	15	4	19	171
Female	129	29	6	5	6	10	22	3	6	11	16	21	264
Subtotal	200	56	12	7	11	13	34	5	11	26	20	40	435
Percent	3%	1%	1%	3%	2%	4%	3%	1%	1%	3%	2%	2%	2.0%
White/Non-Hispanic													
Male	1,521	928	436	48	139	99	147	177	485	167	89	575	4,811
Female	1,342	754	231	53	124	109	392	119	421	147	201	585	4,478
Subtotal	2,863	1,682	667	101	263	208	539	296	906	314	290	1,160	9,289
Percent	43%	43%	35%	41%	38%	57%	54%	32%	46%	40%	36%	60%	43.8%
Unknown													
Male	410	201	131	2	30	19	10	68	141	20	25	67	1,124
Female	402	150	69	1	32	12	29	46	84	24	59	57	965
Subtotal	812	351	200	3	62	31	39	114	225	44	84	124	2,089
Percent	12%	9%	10%	1%	9%	9%	4%	12%	11%	6%	10%	6%	9.8%
TOTAL⁽²⁾	6,641	3,942	1,912	249	691	362	997	920	1,984	788	814	1,929	21,229

Percentage of Minority and International Students by Enrollment Level



(1) Graduate School of Arts and Sciences.

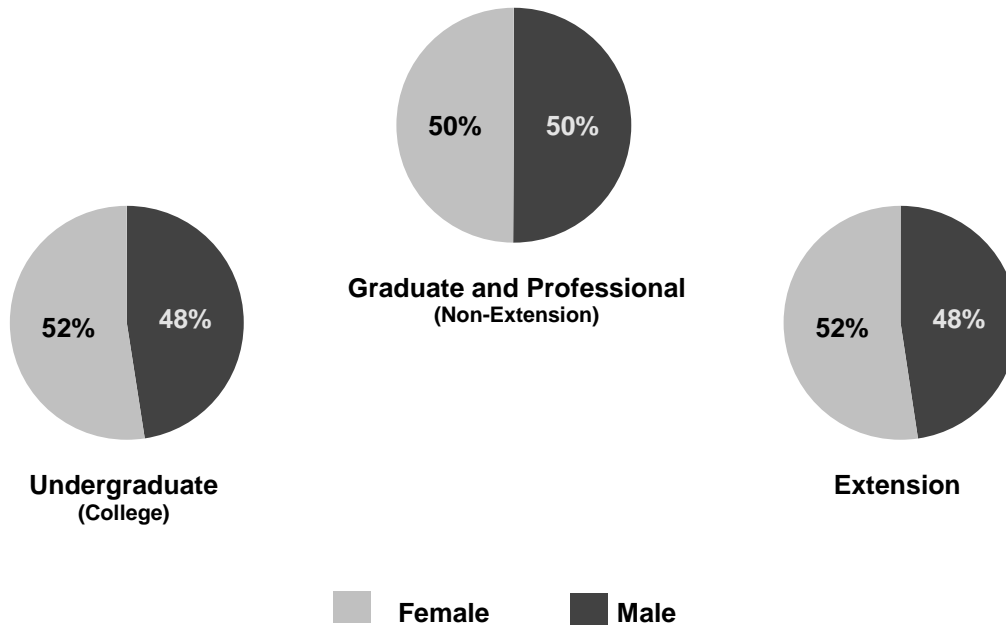
(2) Counts for College and GSAS include Engineering students. Not adjusted for joint degrees.

Note: Changes to federal guidelines for race/ethnicity reporting were incorporated in academic year 2010. Therefore, figures from Fall 2010 and beyond may not be directly comparable to prior years.

SOURCE: REGISTRAR OFFICES

Degrees Conferred by School ⁽¹⁾ Academic Year 2009-2010

	<u>Male</u>	<u>Female</u>	<u>Total</u>
College	796	878	1,674
GSAS ⁽²⁾	470	385	855
Business	570	346	916
Dental	29	40	69
Design	127	107	234
Divinity	67	88	155
Education	174	511	685
Government	343	233	576
Law	408	353	761
Medical	86	94	180
Public Health	186	293	479
Extension			
Undergraduate	65	68	133
Graduate	283	315	598
TOTAL	3,604	3,711	7,315



(1) Not adjusted for joint degree students.

(2) Graduate School of Arts and Sciences

SOURCE: REGISTRAR OFFICES

Degrees Conferred by Program: Academic Year 2009-2010 ⁽¹⁾

		Male	Female	Total
College	A.B.	785	875	1,660
	S.B.	11	3	14
GSAS ⁽²⁾	A.M.	160	157	317
	M.E.	1	1	2
	S.M.	38	20	58
	Ph.D.	271	207	478
Business	M.B.A.	567	342	909
	D.B.A.	3	4	7
Dental	D.M.D.	12	22	34
	M.M.Sc.	8	5	13
	D.M.Sc.	5	2	7
	Certificate	4	11	15
Design	M.Arch.	56	48	104
	M.A.U.D., M.L.A.U.D.	21	11	32
	M.Des.	14	11	25
	M.L.A.	16	21	37
	M.U.P.	15	12	27
	D.Des.	5	4	9
Divinity	M.Div.	22	34	56
	M.T.S.	35	51	86
	Th.M.	6	2	8
	Th.D.	4	1	5
Education	Ed.M.	153	472	625
	Ed.D.	20	34	54
	C.A.S.	1	5	6
Government	M.P.A.	191	105	296
	M.P.A.I.D.	46	19	65
	M.P.P.	104	106	210
	M.U.P.	2	3	5
Law	J.D.	310	279	589
	LL.M.	89	72	161
	S.J.D.	9	2	11
Medical	M.D.	75	78	153
	M.M.Sc.	11	16	27
Public Health	M.P.H.	117	151	268
	S.M.	57	100	157
	D.P.H.	1	2	3
	D.S.	11	40	51
Extension	A.A.	5	1	6
	A.L.B.	60	67	127
	A.L.M.	253	270	523
	Graduate Certificates	30	45	75
	TOTAL	3,604	3,711	7,315

(1) Not adjusted for joint degree students.

(2) Graduate School of Arts and Sciences.

SOURCE: REGISTRAR OFFICES

Harvard College Undergraduate Degrees Conferred by Concentration ⁽¹⁾
Academic Year 2009-2010

	Concentration	Male	Female	Total	
Humanities	English and American Literature and Language	23	62	85	
	History and Literature	14	39	53	
	Visual and Environmental Studies	14	28	42	
	Philosophy	13	7	20	
	East Asian Studies	3	15	18	
	History of Art and Architecture	1	17	18	
	Music	11	7	18	
	Literature	3	12	15	
	Classics	8	6	14	
	Comparative Study of Religion	6	5	11	
	Folklore and Mythology	3	8	11	
	Linguistics	5	4	9	
	Romance Languages and Literatures	1	8	9	
	Near Eastern Languages and Civilizations	3	3	6	
	German	2	2	4	
	Sanskrit and Indian Studies	-	1	1	
	Slavic Languages and Literature	-	1	1	
		Humanities Subtotal	110	225	335
	Natural Sciences	Molecular and Cellular Biology	29	33	62
Neurobiology		18	37	55	
Applied Mathematics		29	17	46	
Human Evolutionary Biology		16	27	43	
Mathematics		33	8	41	
Computer Science		33	7	40	
Chemistry		20	10	30	
Physics		24	3	27	
Organismic and Evolutionary Biology		8	16	24	
Chemical and Physical Biology		11	11	22	
Engineering Sciences (A.B. and S.B.)		25	11	36	
Environmental Science and Public Policy		3	11	14	
Earth and Planetary Sciences		7	4	11	
Chemistry and Physics		6	4	10	
Statistics		8	1	9	
Astrophysics		4	2	6	
Biochemical Sciences		2	3	5	
Biology		2	1	3	
		Natural Sciences Subtotal	278	206	484
Social Sciences	Economics	188	107	295	
	Government	68	72	140	
	History	56	49	105	
	Psychology	28	67	95	
	Social Studies	40	54	94	
	Anthropology	12	46	58	
	Sociology	15	29	44	
	History of Science	11	25	36	
	African and African American Studies	4	9	13	
	Studies of Women, Gender and Sexuality	1	4	5	
		Social Sciences Subtotal	423	462	885
	Special Concentrations Subtotal	5	6	11	
	Grand Total ⁽¹⁾	816	899	1,715	
	Joint Concentrators	(20)	(21)	(41)	
	Unduplicated Student Count	796	878	1,674	

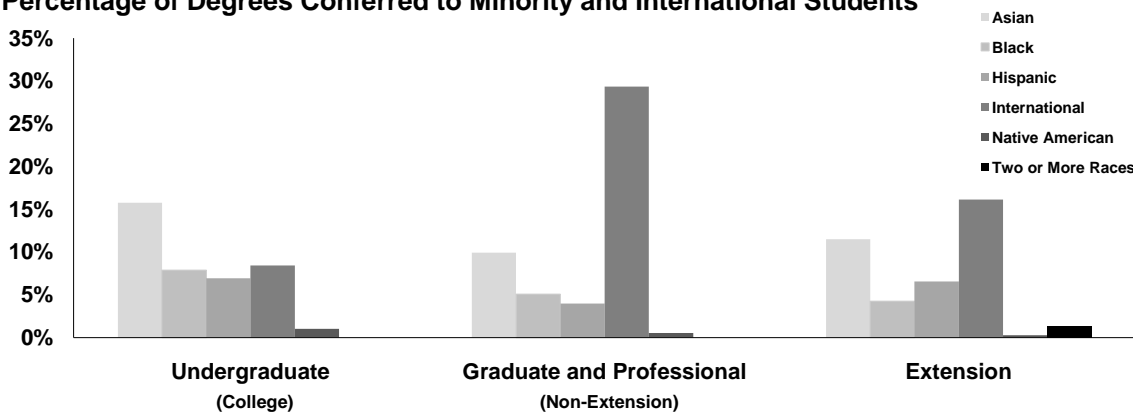
(1) Both concentrations for joint concentrators are included. An adjustment is provided to obtain the total unduplicated student count.

SOURCE: REGISTRAR OFFICES

Degrees Conferred by Student Ethnicity: Academic Year 2009-2010 ⁽¹⁾

	College	GSAS ⁽²⁾	Business	Dental	Design	Divinity	Education	Government	Law	Medical	Public Health	Extension	Total
Asian/Pacific Islander													
Male	108	46	62	5	12	1	14	14	22	30	19	48	381
Female	156	34	58	12	16	3	49	22	27	18	23	36	454
Subtotal	264	80	120	17	28	4	63	36	49	48	42	84	835
Percent	16%	9%	13%	25%	12%	3%	9%	6%	6%	27%	9%	11%	11.4%
Black/Non-Hispanic													
Male	46	5	17	1	2	5	20	10	26	4	6	13	155
Female	86	13	24	1	-	5	27	14	41	13	16	18	258
Subtotal	132	18	41	2	2	10	47	24	67	17	22	31	413
Percent	8%	2%	4%	3%	1%	6%	7%	4%	9%	9%	5%	4%	5.6%
Hispanic													
Male	50	16	26	-	5	1	7	20	18	6	4	22	175
Female	66	12	6	-	5	6	23	13	14	6	8	26	185
Subtotal	116	28	32	-	10	7	30	33	32	12	12	48	360
Percent	7%	3%	3%	0%	4%	5%	4%	6%	4%	7%	3%	7%	4.9%
International Students													
Male	91	173	199	10	49	4	17	157	110	8	91	55	964
Female	50	108	86	8	37	6	86	81	89	12	109	63	735
Subtotal	141	281	285	18	86	10	103	238	199	20	200	118	1,699
Percent	8%	33%	31%	26%	37%	6%	15%	41%	26%	11%	42%	16%	23.2%
Native American													
Male	9	2	4	-	-	2	-	3	1	1	1	-	23
Female	8	1	1	-	-	-	3	4	2	-	2	2	23
Subtotal	17	3	5	-	-	2	3	7	3	1	3	2	46
Percent	1%	0%	1%	0%	0%	1%	0%	1%	0%	1%	1%	0%	0.6%
Two or More Races													
Male	-	-	-	-	-	-	-	-	-	-	-	8	8
Female	-	-	-	-	-	-	-	-	-	-	-	2	2
Subtotal	-	-	-	-	-	-	-	-	-	-	-	10	10
Percent	0%	0%	0%	0%	0%	0%	0%	0%	0%	0%	0%	1%	0%
White/Non-Hispanic													
Male	378	178	189	11	44	42	92	97	176	35	43	185	1,470
Female	373	172	122	15	38	57	272	69	134	42	87	224	1,605
Subtotal	751	350	311	26	82	99	364	166	310	77	130	409	3,075
Percent	45%	41%	34%	38%	35%	64%	53%	29%	41%	43%	27%	56%	42.0%
Unknown/Other													
Male	114	50	73	2	15	12	24	42	55	2	22	17	428
Female	139	45	49	4	11	11	51	30	46	3	48	12	449
Subtotal	253	95	122	6	26	23	75	72	101	5	70	29	877
Percent	15%	11%	13%	9%	11%	15%	11%	13%	13%	3%	15%	4%	12.0%
TOTAL	1,674	855	916	69	234	155	685	576	761	180	479	731	7,315

Percentage of Degrees Conferred to Minority and International Students



(1) Not adjusted for joint degree students.

(2) Graduate School of Arts and Sciences.

Note: Changes to federal guidelines for race/ethnicity reporting were incorporated in academic year 2010. Therefore, figures from 2010 and beyond may not be directly comparable to prior years.

SOURCE: REGISTRAR OFFICES

Degrees Conferred: Academic Year 2005-2010 ⁽¹⁾

		2005	2006	2007	2008	2009	2010
College	A.B.	1,672	1,629	1,671	1,631	1,647	1,660
	S.B.	17	11	25	13	17	14
	Subtotal	1,689	1,640	1,696	1,644	1,664	1,674
GSAS ⁽²⁾	A.M.	331	402	342	380	334	317
	M.E.	-	-	-	1	-	2
	M.F.S.	-	4	1	-	-	-
	S.M.	66	56	59	67	66	58
	Ph.D.	413	473	541	534	512	478
	Subtotal	810	935	943	982	912	855
Business	M.B.A.	884	903	901	907	889	909
	D.B.A.	6	3	5	5	7	7
	Subtotal	890	906	906	912	896	916
Dental	D.M.D.	34	32	30	40	30	34
	M.M.Sc.	12	9	13	14	9	13
	D.M.S.	11	4	8	5	5	7
	Cert.	12	36	20	40	21	15
	Subtotal	69	81	71	99	65	69
Design	M. Arch.	87	81	100	116	97	104
	M.A.U.D., M.L.A.U.D.	28	23	24	21	17	32
	M.Des.	55	45	11	33	33	25
	M.L.A.	47	25	37	25	32	37
	M.U.P.	32	21	24	29	21	27
	D.Des.	7	12	9	12	6	9
Subtotal	256	207	205	236	206	234	
Divinity	M.Div.	58	42	47	43	62	56
	M.T.S.	94	97	96	116	113	86
	Th.M.	4	9	4	3	7	8
	Th.D.	10	9	1	11	6	5
Subtotal	166	157	148	173	188	155	
Education	Ed.M.	643	580	591	552	538	625
	Ed.D.	53	70	53	40	41	54
	C.A.S.	3	11	19	15	18	6
	Subtotal	699	661	663	607	597	685
Government	M.P.A.	298	275	309	276	269	296
	M.P.A.I.D.	64	63	71	83	53	65
	M.P.P.	194	175	205	214	190	210
	M.U.P.	6	5	7	4	-	5
Subtotal	562	518	592	577	512	576	
Law	J.D.	547	582	574	588	567	589
	LL.M.	161	159	154	168	151	161
	S.J.D.	3	7	14	10	13	11
Subtotal	711	748	742	766	731	761	
Medicine	M.D.	147	152	189	174	175	153
	M.M.Sc.	26	22	23	22	26	27
	Subtotal	173	174	212	196	201	180
Public Health	M.P.H.	213	214	220	262	246	268
	S.M., M.O.H.	162	164	125	143	125	157
	D.P.H., D.S.	54	49	52	49	56	54
	Subtotal	429	427	397	454	427	479
Extension	A.A.	20	15	9	7	18	6
	A.L.B.	118	108	106	111	115	127
	A.L.M.	112	140	189	311	430	523
	Grad. Cert.	184	202	113	85	74	75
	Subtotal	434	465	417	514	637	731
TOTAL	6,888	6,919	6,992	7,160	7,036	7,315	

(1) Not adjusted for joint degree students.

(2) Graduate School of Arts and Sciences.

SOURCE: REGISTRAR OFFICES

International Enrollment: Fall 2010 ⁽¹⁾

	Africa	Asia	Europe	Caribbean, Central, and South America	Middle East	North America	Oceania	Stateless	Total
College	60	173	203	25	43	162	28	1	695
GSAS ⁽²⁾	20	665	436	53	105	183	32	-	1,494
Business	25	203	203	47	35	82	17	-	612
Dental	-	25	1	2	8	9	-	-	45
Design	2	128	42	10	7	26	5	-	220
Divinity	3	15	8	-	-	10	-	-	36
Education	3	58	6	13	2	13	6	-	101
Government	29	147	99	49	32	22	9	-	387
Law	29	110	144	39	23	62	14	-	421
Medical	8	10	4	2	-	18	-	-	42
Public Health	25	113	37	16	13	35	9	-	248
Extension	-	12	3	-	3	2	-	-	20
TOTAL	204	1,659	1,186	256	271	624	120	1	4,321

(1) Counts are for full-time students only, and include transfer and special students, visiting undergraduates, and

Extension School enrollees. Counts exclude students whose affiliation is listed as other, executive education and professional development programs.

(2) Graduate School of Arts and Sciences.

SOURCE: HARVARD INTERNATIONAL OFFICE

Historical Enrollment of International Students: Fall 2005 - 2010 ⁽¹⁾

	2005	2006	2007	2008	2009	2010	
Africa							
Ghana	17	25	24	25	21	24	Africa Other: Angola, Botswana, Cameroon, Djibouti, Egypt, Ethiopia, Lesotho, Libya, Madagascar, Mali, Mauritius, Morocco, Namibia, Rwanda, Senegal, Sierra Leone, Sudan, Swaziland, Tanzania, Tunisia, Uganda, Zambia.
Kenya	18	21	17	20	21	28	
Nigeria	25	22	27	35	41	38	
South Africa	22	22	21	23	29	24	
Zimbabwe	16	13	10	15	13	17	
Other	64	60	78	60	60	73	
Subtotal	162	163	177	178	185	204	
Asia							
China	378	403	400	421	463	541	Asia Other: Azerbaijan, Bangladesh, Bhutan, Brunei, Burma (Myanmar), Cambodia, Hong Kong, Indonesia, Kazakhstan, Malaysia, Mongolia, Nepal, Pakistan, Philippines, Sri Lanka, Taiwan, Thailand, Vietnam.
India	189	193	216	225	235	231	
Japan	135	130	127	107	101	100	
Singapore	75	71	66	89	114	133	
South Korea	244	269	297	305	314	304	
Other	298	313	307	328	341	350	
Subtotal	1,319	1,379	1,413	1,475	1,568	1,659	
Europe							
France	76	82	81	84	77	88	Europe Other: Albania, Armenia, Austria, Belarus, Belgium, Bosnia and Herzegovina, Bulgaria, Croatia, Cyprus, Czech Republic, Denmark, Estonia, Finland, Georgia, Hungary, Iceland, Ireland, Latvia, Liechtenstein, Lithuania, Luxembourg, Macedonia, Moldova, Montenegro, Netherlands, Norway, Poland, Portugal, Romania, Russia, Serbia, Slovakia, Slovenia, Sweden, Switzerland, Ukraine.
Germany	159	149	158	159	159	199	
Greece	49	49	56	46	46	44	
Italy	53	53	67	64	69	64	
Spain	44	52	52	66	67	60	
United Kingdom	177	194	201	209	227	242	
Other	464	473	465	467	452	489	
Subtotal	1,022	1,052	1,080	1,095	1,097	1,186	
Caribbean, Central, and South America							
Argentina	35	44	42	32	35	34	Caribbean, Central, and South America Other: The Bahamas, Barbados, Bolivia, Costa Rica, Dominica, Dominican Republic, Ecuador, El Salvador, Guatemala, Haiti, Jamaica, Nicaragua, Panama, Paraguay, St. Lucia, Trinidad and Tobago, Uruguay, Venezuela.
Brazil	64	61	71	72	76	62	
Chile	32	33	32	27	32	37	
Colombia	40	50	35	41	43	40	
Peru	20	28	24	16	19	20	
Other	58	72	73	82	78	63	
Subtotal	249	288	277	270	283	256	
Middle East							
Iran	8	13	11	15	15	19	Middle East Other: Afghanistan, Bahrain, Iraq, Jordan, Kuwait, Syria, United Arab Emirates, West Bank.
Israel	71	81	77	86	85	77	
Lebanon	13	16	22	21	23	29	
Saudi Arabia	10	10	10	14	14	12	
Turkey	71	80	90	96	96	97	
Other	42	37	41	35	38	37	
Subtotal	215	237	251	267	271	271	
North America							
Canada	481	471	489	530	538	541	
Mexico	78	98	83	76	79	83	
Subtotal	559	569	572	606	617	624	
Oceania							
Australia	82	68	67	78	88	98	
New Zealand	20	21	24	19	17	22	
Other	1	-	-	1	1	-	
Subtotal	103	89	91	98	106	120	
Stateless	2	2	1	4	1	1	
TOTAL	3,631	3,779	3,862	3,993	4,128	4,321	

(1) Counts are for full-time students only, and include transfer and special students, visiting undergraduates, and Extension School enrollees. Counts exclude students whose affiliation is listed as other, executive education and professional development programs.

SOURCE: HARVARD INTERNATIONAL OFFICE

Summer School Enrollment: Summer 2005 - 2010

Harvard Students by School ⁽¹⁾

	2005	2006	2007	2008	2009	2010
College	435	497	594	642	620	585
GSAS	76	57	77	61	57	50
Education	10	3	5	6	3	4
Extension	354	339	387	484	600	660
Other Harvard Schools	11	16	14	17	12	9
Subtotal	886	912	1,077	1,210	1,292	1,308

Other Students by Educational Level ⁽²⁾⁽³⁾

Secondary School	1,156	1,444	1,362	1,502	1,303	1,236
Graduate	1,656	1,831	2,002	2,303	2,033	2,055
Undergraduate	1,109	1,286	1,409	1,650	1,499	1,317
Unknown	71	67	70	72	73	45
Subtotal	3,992	4,628	4,843	5,527	4,908	4,653
TOTAL	4,878	5,540	5,920	6,737	6,200	5,961

Non-Degree Head Count: Fall 2005 - 2010 ⁽⁴⁾

	2005	2006	2007	2008	2009	2010		
						Male	Female	Total
College	36	-	-	-	-	-	-	-
GSAS	220	184	160	167	165	95	89	184
Design	6	2	3	3	3	2	1	3
Divinity	7	8	14	6	4	1	-	1
Education	89	104	107	104	63	15	44	59
Government	8	11	21	33	32	23	6	29
Law	68	49	48	35	18	24	22	46
Medical	1	-	-	-	-	-	-	-
Public Health	22	5	8	4	11	8	3	11
Extension ⁽⁵⁾	4,675	5,265	5,300	5,859	6,240	2,856	3,176	6,032
TOTAL	5,132	5,628	5,661	6,211	6,536	3,024	3,341	6,365

(1) Counts include matriculating Harvard students enrolled in Harvard courses during the summer session.

(2) Beginning with 2004, high school graduates enrolled in secondary school programs are counted as undergraduates instead of Secondary School students.

(3) Previous versions of this page erroneously reversed counts for "Undergraduate" and "Secondary School" students in 2007 and 2008.

(4) Non-degree enrollments include all students enrolled on October 15 in at least one class that is creditable toward a degree or formal award.

2005 counts include 58 graduate students and 36 College students displaced by Hurricane Katrina.

(5) Counts are for the first semester only. This significantly undercounts yearly enrollment in the Extension School as approximately the same number of new students might be enrolled in the second semester.

SOURCE: HARVARD UNIVERSITY EXTENSION SCHOOL AND REGISTRAR OFFICES

University-Wide Faculty and Staff as of October 31, 2010

Full-Time Equivalent	Faculty ⁽¹⁾	Other Academic ⁽³⁾	Administrative & Professional	Clerical & Technical	Service & Trades	Grand Total
Faculties	2,242.5	2,101.9	3,888.6	3,455.6	65.6	11,754.2
Arts and Sciences	882.6	726.0	1,465.0	1,253.4	-	4,327.1
Engineering and Applied Science	78.8	168.5	84.2	66.5	8.5	406.6
Business	216.5	7.5	495.6	259.9	-	979.4
Dental ⁽⁴⁾	60.4	29.0	25.3	69.2	-	183.9
Design	58.9	4.3	49.0	48.9	-	161.0
Divinity	45.8	2.9	53.5	35.1	-	137.2
Education	74.4	18.7	189.6	127.8	-	410.5
Government	124.7	76.0	265.4	193.5	-	659.6
Law	115.0	45.1	257.5	216.4	-	633.9
Medical ⁽⁴⁾	423.3	698.1	589.7	749.5	57.1	2,517.8
Public Health	162.2	323.8	356.0	408.2	-	1,250.1
Radcliffe	-	2.0	58.0	27.1	-	87.1
Allied Institutons	1.0	11.5	270.8	141.0	38.6	462.9
Central Administration	18.7	12.2	1,336.0	715.6	890.3	2,972.7
Core Departments ⁽²⁾	18.7	5.5	700.2	384.2	63.0	1,171.6
Service Departments	-	6.7	635.8	331.4	827.3	1,801.2
Non-Departmental and Special	-	-	316.3	70.3	10.5	397.1
University Total	2,262.2	2,125.6	5,811.6	4,382.6	1,005.0	15,587.0

Head Count	Faculty ⁽¹⁾	Other Academic ⁽³⁾	Administrative & Professional	Clerical & Technical	Service & Trades	Grand Total
Faculties	2,415	2,307	4,020	3,636	81	12,459
Arts and Sciences	921	867	1,505	1,356	-	4,649
Engineering and Applied Science	84	183	87	68	9	431
Business	223	8	521	267	-	1,019
Dental ⁽⁴⁾	68	29	27	73	-	197
Design	81	5	51	51	-	188
Divinity	57	9	57	37	-	160
Education	81	36	199	136	-	452
Government	138	85	271	197	-	691
Law	127	46	271	224	-	668
Medical ⁽⁴⁾	450	701	604	776	72	2,603
Public Health	185	337	368	423	-	1,313
Radcliffe	-	1	59	28	-	88
Allied Institutons	1	12	279	153	44	489
Central Administration	20	14	1,386	741	994	3,155
Core Departments ⁽²⁾	20	5	711	395	63	1,194
Service Departments	-	9	675	346	931	1,961
Non-Departmental and Special	-	-	319	72	11	402
University Total	2,436	2,333	6,004	4,602	1,130	16,505

(1) See page 20 for definition of faculty.

(2) Most University Professors are appointed in the Office of the President and Provost.

(3) "Other Academic" includes Senior Academic Leaders, Researchers, and other non-instructional academic titles.

(4) The Dental and Medical School "Faculty" counts include all faculty paid by those schools, whether or not they are located on the HMS Quad.

-Counts reflect active, paid appointments as of 10/31/2010. Head Counts are reported by primary appointment.

-Counts are consistent with Harvard's IPEDS Human Resources submission, excluding Graduate Assistants.

SOURCE: HARVARD HUMAN RESOURCES.

University-Wide Faculty and Staff as of October 31, 2010

By Gender (Head Count)	Faculty ⁽¹⁾	Other Academic ⁽²⁾	Administrative & Professional	Clerical & Technical	Service & Trades	Grand Total
Men	1,687	1,409	2,524	1,430	770	7,820
Women	749	924	3,480	3,172	360	8,685
University Total	2,436	2,333	6,004	4,602	1,130	16,505

By Race/Ethnicity (Head Count)	Faculty ⁽¹⁾	Other Academic ⁽²⁾	Administrative & Professional	Clerical & Technical	Service & Trades	Grand Total
American Indian or Alaska Native	2	2	7	7	-	18
Asian	277	734	427	329	44	1,811
Black or African American	77	54	210	420	205	966
Hispanic of any Race	83	111	201	335	312	1,042
Native Hawaiian or Other Pacific Islander	2	3	2	5	3	15
Two or More Races	24	15	67	75	9	190
Unknown	13	52	53	54	3	175
White	1,958	1,362	5,037	3,377	554	12,288
University Total	2,436	2,333	6,004	4,602	1,130	16,505

By Location (Head Count)	Faculty ⁽¹⁾	Other Academic ⁽²⁾	Administrative & Professional	Clerical & Technical	Service & Trades	Grand Total
Cambridge	1,533	1,250	3,926	2,856	967	10,532
Boston	860	1,046	1,716	1,527	163	5,312
Allston	223	28	721	365	61	1,398
Longwood Medical Area	569	993	938	1,107	84	3,691
Other Boston	68	25	57	55	18	223
Other	43	37	362	219	-	661
University Total	2,436	2,333	6,004	4,602	1,130	16,505

By Funding Type (Full-Time Equivalent)	Faculty ⁽¹⁾	Other Academic ⁽²⁾	Administrative & Professional	Clerical & Technical	Service & Trades	Grand Total
Sponsored Funding	260.9	1,365.2	446.5	562.4	-	2,634.9
University Funding	2,001.3	760.4	5,365.1	3,820.2	1,005.0	12,952.0
Total	2,262.2	2,125.6	5,811.6	4,382.6	1,005.0	15,587.0

(1) See page 20 for definition of faculty.

(2) Most University Professors are appointed in the Office of the President and Provost.

(3) "Other Academic" includes Senior Academic Leaders, Researchers, and other non-instructional academic titles.

(4) The Dental and Medical School "Faculty" counts include all faculty paid by those schools, whether or not they are located on the HMS Quad.

-Counts reflect active, paid appointments as of 10/31/2010. Head Counts are reported by primary appointment.

-Counts are consistent with Harvard's IPEDS Human Resources submission, excluding Graduate Assistants.

SOURCE: HARVARD HUMAN RESOURCES.

Faculty Overview

Faculty by Harvard School and Tenure/Ladder Category, Fall 2010

Category	University (excludes affiliates)	Arts and Sciences	Engineering	Design	Education	Business	Divinity
Tenured	1,012	484	56	30	25	92	21
Pre-Tenure Ladder	485	158	19	23	21	86	9
Core Non-Ladder	714	369	9	54	37	51	8
Other Non-Ladder	509	32	2	1	42	7	28
Total	2,720	1,043	86	108	125	236	66

Category	Government	Law	Medical	Dental	Public Health	Other	Medical Affiliates
Tenured	54	86	112	6	75	10	796
Pre-Tenure Ladder	19	9	65	19	65	-	3,019
Core Non-Ladder	45	52	67	49	86	2	4,884
Other Non-Ladder	55	15	77	146	163	-	2,264
Total	173	162	321	220	389	12	10,963

The following jobs are included as Faculty (with some exceptions to the categorizations shown):

Tenured Faculty

Professor, Chaired
 Professor, University
 Professor

Core Non-Ladder Faculty

Professor of Practice
 Professor of Practice, Chaired
 Professor, Clinical
 Professor, Associate Clinical
 Professor, Assistant Clinical
 Lecturer, Senior
 Lecturer (Faculty)
 Lecturer
 Instructor (HMS Only)
 Critic
 Preceptor
 Preceptor, Senior (Faculty)
 Preceptor (Faculty)
 Preceptor (Other Faculty)

Other Non-Ladder Faculty

Professor of Practice, Visiting
 Professor, Visiting
 Professor, Visiting Assistant
 Professor, Visiting Associate
 Professor, Associate Adjunct
 Professor, Assistant Adjunct
 Professor, Adjunct
 Instructor, Adjunct
 Lecturer, Annual
 Lecturer, Visiting
 Lecturer, Adjunct
 Instructor, Clinical (Other Faculty)
 Assistant, Clinical

Pre-Tenure Ladder Faculty

Professor, Associate
 Professor, Associate Chaired
 Professor, Assistant
 Professor, Assistant Chaired
 Instructor, Convertible

-See the "Faculty Job Codes" document on the Faculty Development and Diversity website (<http://faculty.harvard.edu>) for a full listing of faculty jobs at Harvard.

-Includes primary and secondary appointments. Includes paid and non-paid appointments.

-Faculty members are counted once in each School in which they hold an instructional faculty appointment.

-The "University" column contains unduplicated totals and excludes HMS affiliates.

-Counts in this section differ from pages 18-19 because of the inclusion of unpaid and secondary appointments and the distinction between Medical "Quad" and Affiliate faculty.

-SOURCE: Data compiled for Faculty Development and Diversity Annual Report.

Ladder Faculty Demographics

For more information on faculty diversity, view the complete FD&D annual report: www.faculty.harvard.edu.

Ladder Faculty by Gender, Fall 2010

	Total	Men	Women
Faculty of Arts and Sciences - All	642	471	171
Humanities	201	134	67
Natural Sciences	213	172	41
Social Sciences	228	165	63
Engineering and Applied Sciences	75	65	10
Business	178	134	44
Dental	25	21	4
Design	53	37	16
Divinity	30	19	11
Education	46	23	23
Government	73	57	16
Law	95	76	19
Medical	177	138	39
Public Health	140	94	46
Other	10	6	4
University (Unduplicated)	1,497	1,100	397

Ladder Faculty by Race/Ethnicity, Fall 2010

	Total	Asian	Black or African American	Hispanic	Native American	White
Faculty of Arts and Sciences - All	642	61	21	19	3	538
Humanities	201	16	1	8	1	175
Natural Sciences	213	32	3	7	1	170
Social Sciences	228	13	17	4	1	193
Engineering and Applied Sciences	75	17	-	2	-	56
Business	178	35	3	9	-	131
Dental	25	6	-	1	-	18
Design	53	4	1	6	-	42
Divinity	30	-	2	3	-	25
Education	46	7	4	1	-	34
Government	73	10	2	5	-	56
Law	95	3	7	1	1	83
Medical	177	12	2	5	-	158
Public Health	140	23	4	3	-	110
Other	10	-	3	-	-	7
University (Unduplicated)	1,497	176	46	50	4	1,221

-Includes primary and secondary appointments. Includes paid and non-paid appointments.

-Faculty members are counted once in each School in which they hold an instructional faculty appointment.

-The "University" column contains unduplicated totals and excludes HMS affiliates.

-Counts in this section differ from pages 18-19 because of the inclusion of unpaid and secondary appointments and the distinction between Medical "Quad" and Affiliate faculty.

-SOURCE: Data compiled for Faculty Development and Diversity Annual Report.

Tuition at Harvard Schools: FY1991 – FY2011⁽¹⁾

Academic Year	College	GSAS	Business	Design	Divinity	Education	Government ⁽²⁾	Law	Medical/Dental ⁽³⁾	Public Health ⁽⁴⁾
1991	13,960	13,960	16,400	14,300	9,200	13,152	13,390	14,475	18,030	13,570
1992	14,860	14,860	17,500	15,450	9,940	14,192	14,662	15,560	19,110	14,790
1993	15,870	15,870	18,550	16,650	10,540	15,044	15,690	16,730	20,257	15,675
1994	16,856	16,856	19,750	17,483	11,070	15,796	16,631	17,750	21,260	16,775
1995	17,851	17,851	21,000	18,360	11,630	16,664	17,710	19,080	22,300	17,770
1996	18,838	18,838	22,700	19,276	12,220	17,581	18,650	20,500	23,192	18,840
1997	19,770	19,770	23,840	20,240	12,830	18,460	19,770	21,700	24,150	19,800
1998	20,600	20,600	25,000	21,252	13,480	19,476	20,720	22,800	25,200	20,890
1999	21,342	21,342	26,260	22,208	14,160	20,430	21,656	23,900	26,000	21,895
2000	22,054	22,054	27,250	23,163	14,870	21,410	22,520	25,000	27,000	22,950
2001	22,694	22,694	28,500	24,159	15,620	22,600	23,400	26,000	28,000	23,980
2002	23,457	23,370	30,050	25,195	16,400	23,720	24,320	27,500	29,000	25,050
2003	24,630	24,630	31,800	26,330	17,220	25,144	26,488	29,500	30,500	26,300
2004	26,066	26,066	33,650	27,910	18,080	26,628	28,580	31,250	32,000	27,670
2005	27,448	27,448	35,600	29,500	18,984	28,092	30,272	33,120	34,250	29,300
2006	28,752	28,752	37,500	30,916	19,920	29,360	31,752	35,100	35,800	30,620
2007	30,275	30,275	39,600	32,152	20,712	30,544	33,276	37,100	37,200	31,800
2008	31,456	31,456	41,900	33,438	21,544	31,696	34,807	39,325	38,600	34,085
2009	32,557	32,556	43,800	34,608	22,080	32,896	36,168	41,500	39,900	35,403
2010	33,696	33,696	46,150	35,992	22,856	34,208	37,576	43,900	42,500	36,125
2011	\$34,976	\$34,976	\$48,600	\$37,432	\$23,544	\$35,568	\$39,041	\$45,450	\$45,050	\$37,230

Compound Annual Growth Rates

	College	GSAS	Business	Design	Divinity	Education	Government	Law	Medical/Dental	Public Health
20 YEAR	4.7%	4.7%	5.6%	4.9%	4.8%	5.1%	5.5%	5.9%	4.7%	5.2%
10 YEAR	4.4%	4.4%	5.5%	4.5%	4.2%	4.6%	5.3%	5.7%	4.9%	4.5%
5 YEAR	4.0%	4.0%	5.3%	3.9%	3.4%	3.9%	4.2%	5.3%	4.7%	4.0%
1 YEAR	3.8%	3.8%	5.3%	4.0%	3.0%	4.0%	3.9%	3.5%	6.0%	3.1%

(1) All amounts exclude the University Health Service fee.

(2) For FY2003 and FY2004, the School of Government implemented two tuition rate increases: one for first-year students (shown above) and one for returning students (FY2003 is \$25,440 and FY2004 is \$27,704).

(3) Dental School tuition is \$35,790 for FY2006 and \$26,050 for FY1999.

(4) Beginning in FY2008, HSPH implemented different full-time tuition amounts for one-year programs (MPH, MS 1-year) and multiple-year programs (MS 2-year and DS). Amount shown in table is for one-year programs.

Full-time tuition for two-year Master's programs for FY2010 is \$34,000 and for FY2011 is \$35,040.

SOURCE: ANNUAL TUITION PROPOSALS APPROVED BY THE CORPORATION.

Undergraduate Tuition Over Time: FY1991 - FY2011

Academic Year	Undergraduate Package						Economic Indicators			
	Health Services			Student Services			CPI-U (1982-84=100)		HEPI	Median Family Income
	Tuition	Fee	Room	Board	Fee	Total	US	Boston (1983=100)	(1983=100)	Ages 45-54
1990-91	13,960	490	2,700	2,425	1,080	20,655	130.7	138.9	140.8	46,101
1991-92	14,860	550	2,900	2,620	1,150	22,080	136.2	145.0	148.1	47,164
1992-93	15,870	584	3,075	2,765	1,220	23,514	140.3	148.6	153.4	49,606
1993-94	16,856	614	3,225	2,910	1,275	24,880	144.5	152.9	157.9	50,079
1994-95	17,851	634	3,370	3,040	1,335	26,230	148.2	154.9	163.3	52,034
1995-96	18,838	634	3,510	3,200	1,393	27,575	152.4	158.6	168.3	54,379
1996-97	19,770	654	3,659	3,336	1,477	28,896	156.9	163.3	173.3	55,029
1997-98	20,600	666	3,808	3,470	1,536	30,080	160.5	167.9	178.6	57,161
1998-99	21,342	686	3,940	3,574	1,590	31,132	163.0	171.7	184.9	59,959
1999-00	22,054	711	4,072	3,685	1,642	32,164	166.6	176.0	189.1	61,833
2000-01	22,694	745	4,190	3,792	1,689	33,110	172.2	183.6	196.9	65,303
2001-02	23,457	816	4,331	3,919	1,746	34,269	177.1	191.5	206.5	68,082
2002-03	24,630	1,020	4,461	4,041	1,798	35,950	179.9	196.5	212.7	68,114
2003-04	26,066	1,142	4,706	4,162	1,852	37,928	184.0	203.9	223.5	69,180
2004-05	27,448	1,264	4,974	4,286	1,908	39,880	188.9	209.5	231.7	70,149
2005-06	28,752	1,370	5,148	4,430	1,975	41,675	195.3	216.4	240.8	71,002
2006-07	30,275	1,390	5,328	4,618	2,044	43,655	201.6	223.1	253.1	72,881
2007-08	31,456	1,426	5,856	4,766	2,116	45,620	207.3	227.4	260.3	75,692
2008-09	32,557	1,426	6,060	4,982	2,190	47,215	215.3	235.4	273.2	77,440
2009-10	33,696	1,126	7,248	4,608	2,190	48,868	214.5	233.8	279.3	75,651
2010-11	\$34,976	\$1,166	\$7,525	\$4,783	\$2,273	\$50,723	218.1	237.4	281.8	\$75,707

Compound Annual Growth Rates

	Undergraduate Package						Economic Indicators ⁽¹⁾			
	Health Services			Student Services			CPI-U (1982-84=100)		HEPI	Median Family Income
	Tuition	Fee	Room	Board	Fee	Total	US	Boston (1983=100)	(1983=100)	Ages 45-54
20 YEAR	4.7%	4.4%	5.3%	3.5%	3.8%	4.6%	2.6%	2.7%	3.5%	2.5%
10 YEAR	4.4%	4.6%	6.0%	2.3%	3.0%	4.4%	2.4%	2.6%	3.7%	1.5%
5 YEAR	4.0%	-3.2%	7.9%	1.5%	2.9%	4.0%	2.2%	1.9%	3.2%	1.3%
1 YEAR	3.8%	3.6%	3.8%	3.8%	3.8%	3.8%	1.6%	1.6%	0.9%	0.1%

(1) Economic Indicators are based on the most recent indicators available at time of publication.

SOURCE: BUREAU OF LABOR STATISTICS, US CENSUS BUREAU, COMMONFUND INSTITUTE.

Degree Student Financial Assistance: FY2010 ⁽¹⁾

Expressed in thousands of dollars

GRANTS

	Institutional	Federal	Other Outside	Total	Grants as a
					% of Total School Aid
College	\$140,887	\$8,974	\$10,755	\$160,616	88.6%
GSAS	88,033	\$21,733	\$12,635	122,402	75.3%
Business ⁽²⁾	28,391	\$1,692	\$2,072	32,155	41.5%
Dental	1,312	\$26	\$50	1,388	14.4%
Design	8,635	\$5	\$946	9,585	47.3%
Divinity	9,210	\$7	\$246	9,462	72.9%
Education	11,279	\$189	\$1,799	13,267	48.4%
Government	17,792	\$902	\$6,712	25,406	62.6%
Law	17,680	\$605	\$3,130	21,415	26.0%
Medical	13,948	\$2,616	\$2,054	18,619	58.9%
Public Health	9,652	\$2,905	\$3,561	16,117	67.7%
Extension	1,020	\$493	\$66	1,579	15.2%
TOTAL	\$347,839	\$40,147	\$44,025	\$432,011	63.5%

Grants

Institutional grants are from University unrestricted and restricted monies.

Federal grants include all Federal programs in each school including programs such as the Pell grant, SEOG or graduate training grants.

Outside grants include state and private support of students. In some schools, these numbers may include corporate sponsorship or other sponsored billing.

LOANS

	Institutional	Federal	Other Outside	Total	Loans as a
					% of Total School Aid
College ⁽³⁾	\$4,403	\$7,955	\$1,967	\$14,325	7.9%
GSAS	-	1,410	191	1,601	1.0%
Business	-	26,550	18,808	45,358	58.5%
Dental	153	7,417	683	8,253	85.6%
Design	47	9,120	899	10,067	49.6%
Divinity	34	2,921	-	2,955	22.8%
Education	99	13,123	240	13,462	49.2%
Government	275	12,277	1,168	13,720	33.8%
Law	1,882	54,662	3,455	59,999	72.7%
Medical	3,501	9,147	313	12,961	41.0%
Public Health	126	5,306	2,190	7,623	32.0%
Extension	-	7,308	1,483	8,792	84.8%
TOTAL	\$10,521	\$157,195	\$31,398	\$199,114	29.3%

Loans

Institutional loans are made to students from University capital without Federal guarantee.

Federal loan programs may involve capital from Harvard, or other private or Federal sources, loaned under Federal sponsorship such as Perkins, Direct Loans and FFEL programs.

Outside loans include private capital loaned to students or parents. It excludes personal loans.

EMPLOYMENT

	Employment as				TOTAL Grant, Loans & Employment
	Federal	Other	Total	a % of Total School Aid	
	Work-Study	Term			
College	\$887	\$5,458	\$6,345	3.5%	\$181,286
GSAS	479	38,143	38,622	23.7%	162,625
Business	-	-	-	0.0%	77,513
Dental	-	-	-	0.0%	9,640
Design	475	156	631	3.1%	20,283
Divinity	565	-	565	4.4%	12,982
Education	658	-	658	2.4%	27,387
Government	261	1,172	1,433	3.5%	40,559
Law	645	453	1,098	1.3%	82,511
Medical	33	-	33	0.1%	31,612
Public Health	54	-	54	0.2%	23,794
Extension	-	-	-	0.0%	10,371
TOTAL	\$4,056	\$45,383	\$49,439	7.3%	\$680,564

Employment

Work-Study is a Federally-sponsored partnership with colleges and universities to provide students with the opportunity to work while in school.

Other term earnings reflect on-campus earnings by students who are not part of the work-study program. Jobs include casual employment (to the extent known), teaching fellowships, research assistantships and resident tutors.

(1) Amounts do not include the Business School, Law School, Medical School or the School of Government funding for graduates in the

Low Income Protection Plan/Loan Repayment Assistance Programs. As of FY10, data for Federal Loans excludes the loan fee.

(2) Total excludes students receiving \$10,572,794 in financial aid through employee assistance or sponsored billing.

(3) College total for loans includes \$9,213,512 in PLUS Loans and other Parental Loans.

SOURCE: INTERNAL SURVEY

Federal Sponsored Research: FY2009- FY2010

Expressed in thousands of dollars

FACULTIES	FY2009			FY2010			Change in Total Exp. 2009/2010	FY2010 Eff. Indirect Cost Rate ⁽¹⁾
	Direct Costs	Indirect Costs	Total Costs	Direct Costs	Indirect Costs	Total Costs		
Faculty of Arts & Sciences ⁽²⁾	\$62,472	\$28,265	\$90,737	\$72,935	\$34,381	\$107,316	18.3%	47.1%
Engineering and Applied Sciences ⁽³⁾	19,978	8,790	28,768	22,698	11,077	33,775	17.4%	48.8%
Business	-	-	-	8	-	8		
Dental	4,076	2,169	6,245	5,218	2,938	8,156	30.6%	56.3%
Design	-	-	-	19	-	19	-	-
Education	2,575	797	3,372	4,356	1,379	5,735	70.1%	31.7%
Government	3,829	1,107	4,936	3,777	1,273	5,050	2.3%	33.7%
Law School	745	354	1,099	576	144	720	(34.5%)	25.0%
Medical	153,443	59,204	212,647	172,781	67,475	240,256	13.0%	39.1%
Public Health	167,868	38,116	205,984	169,344	38,444	207,788	0.9%	22.7%
Faculties Subtotal	\$414,987	\$138,801	\$553,788	\$451,712	\$157,111	\$608,823	9.9%	34.8%
Other Departments ⁽⁴⁾	\$551	\$203	\$754	\$2,877	\$404	\$3,281	335.1%	14.0%
GRAND TOTAL ⁽⁵⁾	\$415,538	\$139,004	\$554,542	\$454,589	\$157,515	\$612,104	10.4%	34.6%

(1) The effective rate is the indirect costs as a percentage of total direct costs.

(2) Includes FAS Interfaculty Initiatives.

(3) Includes SEAS Interfaculty Initiatives

(4) Includes Arnold Arboretum, College Library, Central Administration, Harvard University Art Museums, Joint Center for Housing Studies, President's Initiatives, and University Interfaculty Initiatives.

(5) Totals include both Federal and Federal Once-Removed (Federal Once-Removed total cost for FY2009 is \$55,444 and for FY2010 is \$62,277). Totals exclude financial aid and agency funds.

SOURCE: OFFICE FOR SPONSORED PROGRAMS - ANNUAL REPORT

Federal Research by Agency: FY2009 - FY2010

Expressed in thousands of dollars

	FY2009	FY2010	% Change	FY2010 Total as % of Federal Total
Department of Health & Human Services				
National Institutes of Health	\$380,767	\$431,176	13.2%	70.4%
Other DHHS	82,165	78,397	(4.6%)	12.8%
Subtotal	\$462,932	\$509,573	10.1%	83.2%
Department of Defense				
Defense Advanced Research Projects Agency ⁽¹⁾	9,768	10,387	6.3%	1.7%
Department of the Army	4,784	3,104	(35.1%)	0.5%
Department of the Navy	1,342	3,257	142.7%	0.5%
Department of the Air Force ⁽²⁾	5,847	7,860	34.4%	1.3%
Subtotal	\$21,741	\$24,608	13.2%	4.0%
National Science Foundation	38,304	42,074	9.8%	6.9%
Department of Energy	7,436	9,499	27.7%	1.6%
National Aeronautics & Space Administration	7,209	9,482	31.5%	1.5%
Department of Education	3,035	5,114	68.5%	0.8%
Environmental Protection Agency	3,917	3,403	(13.1%)	0.6%
Department of State	2,664	2,326	(12.7%)	0.4%
Agency for International Development	1,123	1,034	(7.9%)	0.2%
Department of Veterans Affairs	1,251	767	(38.7%)	0.1%
Department of Transportation	829	732	(11.7%)	0.1%
Central Intelligence Agency	876	565	(35.5%)	0.1%
Department of Justice	484	528	9.1%	0.1%
Department of Commerce	396	427	7.8%	0.1%
National Endowment for the Humanities	351	274	(21.9%)	0.0%
Department of Homeland Security	204	262	28.4%	0.0%
Neighborhood Reinvestment Corporation	395	210	(46.8%)	0.0%
Department of Interior	334	120	(64.1%)	0.0%
Smithsonian Institution	226	117	(48.2%)	0.0%
Department of Agriculture	166	108	(34.9%)	0.0%
Department of Housing and Urban Development	232	69	(70.3%)	0.0%
Library of Congress	28	66	135.7%	0.0%
Other Federal Agencies	410	746	82.0%	0.1%
GRAND TOTAL ⁽³⁾	\$554,542	\$612,104	10.4%	100.0%

(1) Includes Other - Department of Defense.

(2) Includes Air Force Office of Scientific Research

(3) Totals include both Federal and Federal Once-Removed (Federal Once-Removed total cost for FY2009 is \$55,444 and for FY2010 is \$62,277). Totals exclude financial aid and agency funds.

SOURCE: OFFICE FOR SPONSORED PROGRAMS

Non-Federal Sponsored Research: FY2009 - FY2010

Expressed in thousands of dollars

FACULTIES	FY2009			FY2010			Change in Total Exp. 2009/2010	FY2010 Eff. Indirect Cost Rate ⁽¹⁾
	Direct Costs	Indirect Costs	Total Costs	Direct Costs	Indirect Costs	Total Costs		
Faculty of Arts & Sciences ⁽²⁾	\$31,860	\$3,249	\$35,109	\$35,473	\$3,891	\$39,364	12.1%	11.0%
Engineering and Applied Sciences	5,685	1,859	7,543	6,007	2,445	8,452	12.0%	40.7%
Business	6	-	6	23	-	23	269.3%	0.0%
Dental	629	86	715	148	10	158	(77.9%)	6.8%
Design	347	38	385	367	59	426	10.7%	16.1%
Divinity	202	20	222	104	10	114	(48.7%)	9.6%
Education	8,934	983	9,917	10,894	1,047	11,941	20.4%	9.6%
Government	18,337	2,647	20,984	17,611	2,662	20,273	(3.4%)	15.1%
Law	4,819	274	5,093	5,190	327	5,517	8.3%	6.3%
Medical	30,755	4,418	35,173	31,571	4,949	36,520	3.8%	15.7%
Public Health	28,790	3,719	32,509	28,229	3,996	32,225	(0.9%)	14.2%
Radcliffe Institute for Advanced Study	16	-	16	32	-	32	100.1%	0.0%
Faculties Subtotal	\$130,379	\$17,294	\$147,673	\$135,649	\$19,396	\$155,045	5.0%	14.3%
Other Departments ⁽³⁾	\$2,722	\$137	\$2,859	\$2,299	\$97	\$2,396	(16.2%)	4.2%
GRAND TOTAL ⁽⁴⁾	\$133,101	\$17,431	\$150,532	\$137,948	\$19,493	\$157,441	4.6%	14.1%

(1) The effective rate is the indirect cost as a percentage of total direct cost.

(2) Includes FAS Interfaculty Initiatives.

(3) Includes Harvard University Art Museums, Joint Center for Housing Studies, Nieman Foundation, Villa I Tatti, University Library, Arnold Arboretum (FY10 only), University Health Services (FY10 only), and University Interfaculty Initiatives.

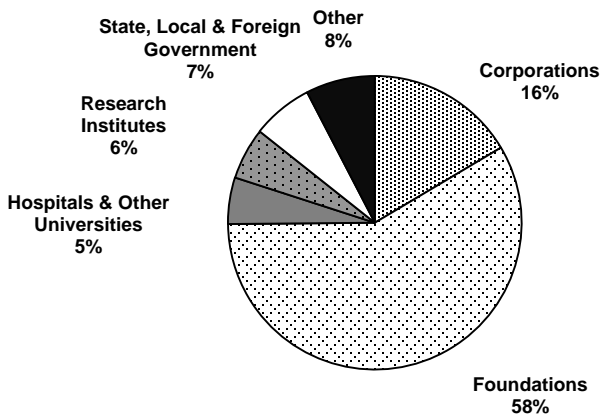
(4) Total excludes financial aid expenditures and agency funds.

SOURCE: OFFICE FOR SPONSORED PROGRAMS - ANNUAL REPORT

Non-Federal Expenditures by Sponsor Type: FY2010

Expressed in thousands of dollars

	Corporations	Foundations	Hospitals & Other Universities	Research Institutes	State, Local, & Foreign Government	Other Sources	Total
Faculty of Arts & Sciences ⁽¹⁾	\$6,992	\$25,145	\$1,361	\$2,027	\$1,838	\$2,001	\$39,364
Engineering and Applied Sciences	4,663	1,167	1,503	486	418	215	8,452
Business	-	23	-	-	-	-	23
Dental	59	98	-	-	-	-	157
Design	3	96	-	113	15	199	426
Divinity	-	114	-	-	-	-	114
Education	93	10,980	-	24	98	746	11,941
Government	2,121	10,455	212	1,378	3,310	2,797	20,273
Law	80	5,337	0	83	8	10	5,518
Medical	7,924	20,766	1,893	1,554	1,655	2,728	36,520
Public Health	3,968	15,690	3,122	3,169	3,201	3,075	32,225
Radcliffe Institute for Advanced Study	-	32	-	-	-	-	32
Faculties Subtotal	\$25,903	\$89,903	\$8,091	\$8,834	\$10,543	\$11,771	\$155,045
Other Departments ⁽²⁾	\$0	\$2,038	(\$16)	\$138	\$7	\$229	\$2,396
GRAND TOTAL ⁽³⁾	\$25,903	\$91,941	\$8,075	\$8,972	\$10,550	\$12,000	\$157,441



(1) Includes FAS Interfaculty Initiatives

(2) Includes Arnold Arboretum, Harvard University Art Museums, Joint Center for Housing Studies, Nieman Foundation, Villa I Tatti, University Interfaculty Initiatives, University Health Services, and University Library.

(3) Total excludes financial aid expenditures and agency funds.

SOURCE: OFFICE FOR SPONSORED PROGRAMS

Historical Funding of Research by Sponsor

Expressed in thousands of dollars

Federal (Prime and Once-Removed)

	Fiscal Year				
	2006	2007	2008	2009	2010
National Institutes of Health	\$362,878	\$344,832	\$351,206	\$380,767	\$431,176
Other DHHS	41,560	66,529	82,578	82,165	78,397
National Science Foundation	38,162	35,886	36,931	38,304	42,074
Department of Defense	23,059	19,451	19,891	21,741	24,608
Department of Energy	11,747	12,037	8,513	7,436	9,499
Nat'l. Aeronautics & Space Administration	9,324	10,170	9,934	7,209	9,482
Department of Education	6,242	4,157	2,503	3,035	5,114
Environmental Protection Agency	5,983	5,011	4,230	3,917	3,403
Department of State	1,796	1,658	2,603	2,664	2,326
Agency for International Development	7,598	5,963	3,626	1,123	1,034
Department of Commerce	1,164	1,258	396	395	427
Other ⁽¹⁾	4,178	4,305	6,289	5,786	4,564
Federal Total	\$513,692	\$511,255	\$528,700	\$554,542	\$612,104

Non-Federal

	2006	2007	2008	2009	2010
Foundations	\$74,129	\$72,906	\$81,456	\$91,836	\$91,941
Corporations	9,147	15,588	19,786	24,339	25,903
Other Sources	5,195	8,879	9,144	9,386	12,000
State, Local & Foreign Government	12,154	13,142	10,585	11,120	10,550
Research Institutes	6,773	3,825	4,801	6,532	8,972
Hospitals & Other Universities	2,868	4,537	5,609	7,319	8,075
Non-Federal Total	\$110,266	\$118,878	\$131,381	\$150,532	\$157,441
GRAND TOTAL ⁽²⁾	\$623,958	\$630,133	\$660,081	\$705,074	\$769,545

Growth in Sponsored Projects

Expressed in millions of dollars

Fiscal Year	Expenditure Actual \$	% Change	Expressed as FY10 \$	% Change in FY10 \$
2006	\$624.0	-	\$679.6	-
2007	630.1	1.0%	669.0	(1.6%)
2008	660.1	4.8%	675.8	1.0%
2009	705.1	6.8%	711.9	5.3%
2010	\$769.5	9.1%	\$769.5	8.1%

(1) Agencies listed on this exhibit are based on FY2010 expenditures. Information on agencies in prior years can be obtained from the Office for Sponsored Programs.

(2) Total excludes financial aid expenditures and agency funds.

SOURCE: OFFICE FOR SPONSORED PROGRAMS - ANNUAL REPORT

Harvard Library: FY2010

Harvard's library system now includes more than 70 separate library units, which are operated by nearly 1,000 full-time employees who provide a range of services that ensure access to 16.8 million volumes, 15.8 million digital files, 100,000 serial titles, 8 million photographs, and an estimated 400 million manuscript items.

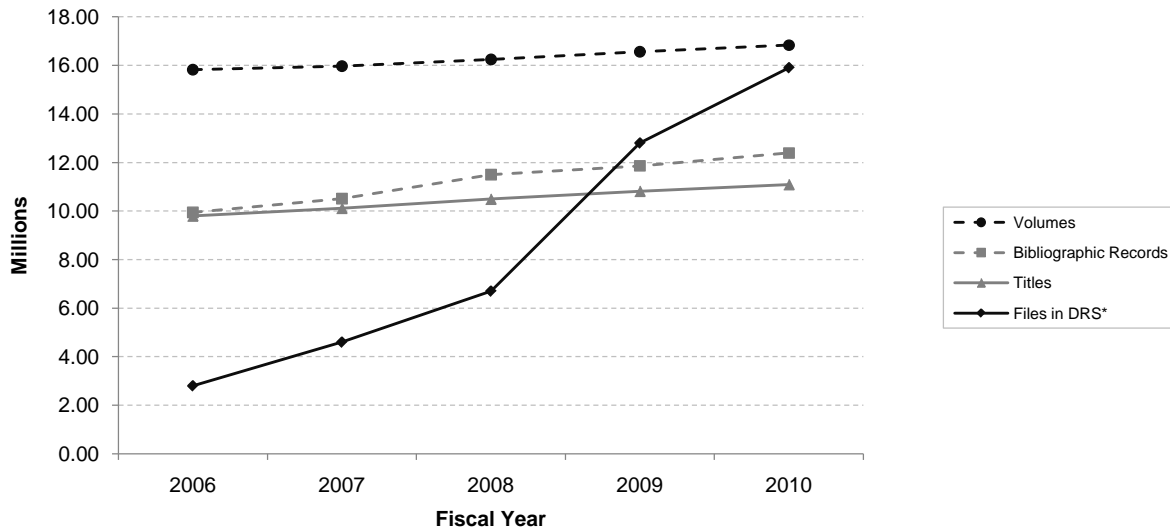
Even these impressive numbers fail to do justice to the importance of the library system for Harvard. For many students, faculty members, and departments, Harvard library collections are at the core of their intellectual experience. Harvard's libraries are not only a local strength, but also a global treasure that supports the scholarly work of an untold number of researchers worldwide.

The Harvard Library's annual report for 1919–1920 established the combined count of books and pamphlets as the essential metric for the University's library holdings. For generations, Harvard has supplied this and other statistics requested by the Association of Research Libraries, which compiles them from its entire membership and prepares the annual "rankings" of the member libraries. By several metrics, including the volume count, Harvard's Library is the largest of the ARL member libraries.

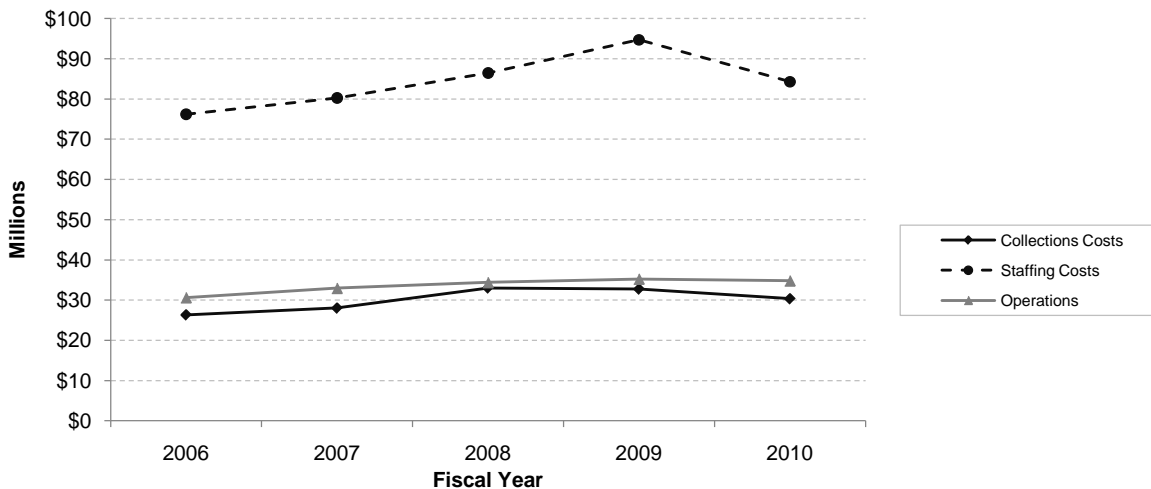
Throughout the ARL assessment community, there is a growing conviction that titles (or bibliographic records) provide a clearer, more accurate, more replicable statistic than volumes.

For the 2009–2010 academic year, we can estimate the Harvard Library's volume count at 16.8 million, and we can document the Library's title count at 11.1 million. In the interest of clear metrics, accountability, and best practices, the Harvard Library will shift its statistical emphasis from volumes to titles beginning in the 2010–2011 academic year.

Volumes, Records, Titles, and Digital Files



Total Expenditures



*Digital Repository Service
SOURCE: HARVARD LIBRARY OFFICE OF THE EXECUTIVE DIRECTOR

Harvard Library: FY2010

Collections as of June 30, 2010

Expressed in thousands unless otherwise noted

Formats

Metric	FY 2009	FY 2010	Change
Manuscript items	–	400,000 *	0%
Volumes	16,500	16,800	2%
Bibliographic records	11,800	12,400	5%
Titles	10,800	11,100	3%
Microforms	–	10,000 *	0%
Photographs	–	8,000 *	0%
Items circulated	2,000	1,500	-33%
E-Resources	370	607	64%
Serial titles	132	158	19%

* Numbers provided for manuscript items, microforms, and photographs are estimated based on prior surveys.

Digital Repository Service (DRS)

Metric	FY 2009	FY 2010	Change
Files	12,415	15,888	28%
Disk storage (gigabytes)	96,467	115,308	20%

Harvard Online Library Information System (HOLLIS)

Metric	FY 2009	FY 2010	Change
Records	11,862	13,421	13%
Searches	5,334	5,053	-6%

Based on a new, user-centric discovery platform, Harvard launched a new version of the HOLLIS union catalog in 2009.

Visual Information Access (VIA)

Metric	FY 2009	FY 2010	Change
Records	589	678	15%
Records including digital images	457	545	19%
Searches	153	138	-10%
Number of images	2,019	3,109	54%

Online Archival Search Information System (OASIS)

Metric	FY 2009	FY 2010	Change
Records (finding aids)	4.2	4.5	6%
Sessions	588.4	480.4	-18%
Searches	61.4	58.5	-5%
Finding aids displayed	66.3	104.8	58%

Physical Plant: FY2010

The University owns and operates more than six hundred buildings of varying sizes and characteristics, spread over a wide geographic area. They encompass approximately 25.8 million gross square feet of space. The physical plant provides living space for students and faculty, research facilities to advance our base of knowledge, classroom and library spaces for the dissemination of knowledge, and space for administrative and support services.

Location ⁽¹⁾	Gross Square Footage ⁽²⁾ of		Principal Activity on Site
	Acres	Buildings (in 000's)	
Cambridge, MA	210	15,456	Main Campus
Boston, MA	22	3,182	Medical & Dental Schools; School of Public Health
Boston (Allston)	359	5,135	Business School; University Publisher; Athletics, Other
Boston (Jamaica Plain)	238	54	Arnold Arboretum
Watertown MA	14	1,118	Arsenal Buildings
Weston, MA	69	11	Case Estates (Arnold Arboretum)
Somerville, MA	2	96	Affiliated Housing
Medford, MA	1		
Bedford, MA	79	11	Concord Field Station
Carlisle, MA	69		Concord Field Station
Concord, MA	605		Field Station (Museum of Comparative Zoology)
Marlborough, MA	43		Animal Research Center (NERPC)
Southborough, MA	87	308	Harvard Depository
Petersham, MA	2857	73	Harvard Forest (Forestry, Botany)
Hamilton, MA	98		Harvard Forest
Phillipston, MA	204		Harvard Forest
Royalston, MA	57		Harvard Forest
Harvard, MA	37	19	Agassiz Cottage (Observatory)
Shrewsbury, MA	6	16	Artemas Ward Homestead (Museum)
Kittery Point, ME	2	6	Howells Memorial
Ledyard, CT	n/a	21	Red Top Crew Quarters
Washington, DC	17	225	Dumbarton Oaks & Center for Hellenic Studies
Florence & Fiesole, Italy	n/a	94	Villa I Tatti (Center for Italian Renaissance Studies)
Sardis, Turkey	n/a	6	HUAM Archaeological Site
TOTAL	5,076	25,832	

(1) In addition to locations listed above, Harvard has numerous smaller holdings.

(2) As of FY2007, square footage figures are reported according to National Center for Education Statistics Postsecondary Education Facilities Inventory and Classification Manual (FICM) standards. Therefore, values may differ from previous years.

SOURCE: HARVARD REAL ESTATE SERVICES

Physical Plant: FY2010

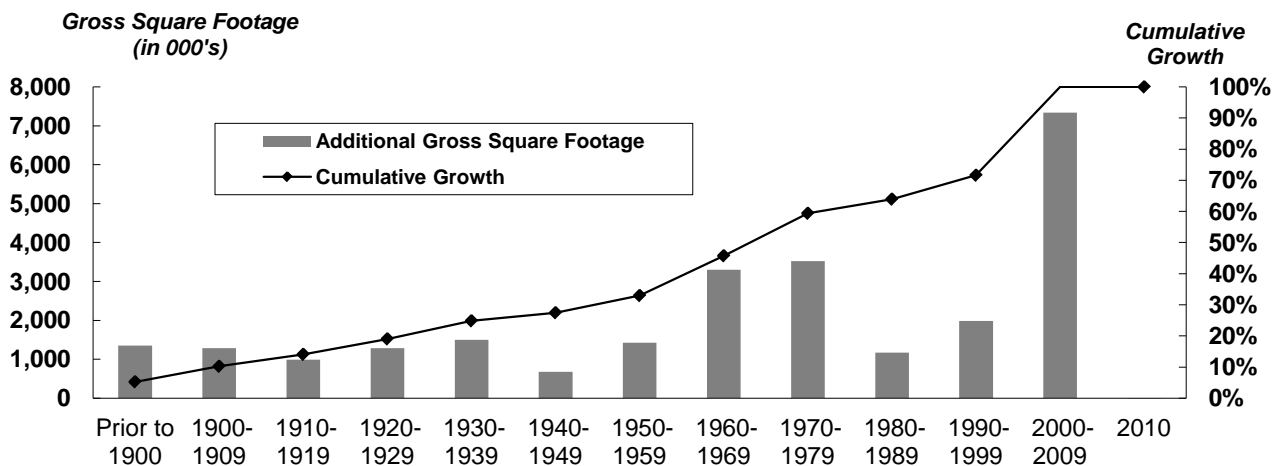
Building Ownership

	Number of Buildings	Gross Square Footage	
		of Buildings (in 000's)	As a % of Total
FAS ⁽¹⁾	258	9,273	35.9%
SEAS ⁽²⁾	5	337	1.3%
Business	33	1,554	6.0%
Dental	2	102	0.4%
Design	3	181	0.7%
Divinity	7	189	0.7%
Education	6	223	0.9%
Government	6	275	1.1%
Law	21	926	3.6%
Medical	26	2,529	9.8%
Radcliffe	15	286	1.1%
Public Health	7	589	2.3%
Real Estate	223	7,919	30.7%
Central Administration	48	1,451	5.6%
TOTAL	660	25,832	100.0%

Primary Uses

	Gross Square Footage	
	of Buildings (in 000's)	As a % of Total
Residential/Dormitory	7,656	29.6%
Lab/Studio	4,966	19.2%
Office/Classroom	4,771	18.5%
Commercial	3,081	11.9%
Support	1,604	6.2%
Library	1,537	6.0%
Assembly/Museum	1,253	4.9%
Athletic	847	3.3%
Health Care	118	0.5%
TOTAL	25,832	100.0%

Additions to the Physical Plant



(1) Faculty of Arts and Sciences.

(2) School of Engineering and Applied Sciences.

SOURCE: HARVARD REAL ESTATE SERVICES

Summary of Environmental Performance at Harvard

Greenhouse Gas Emissions from Harvard University by Location: FY2010

	2010 Baseline Emissions (MTCDE) ⁽¹⁾	% Change Baseline Emissions (MTCDE) FY06-10	2010 Total Emissions (MTCDE)	% Change Total Emissions (MTCDE) FY06-10
Faculty of Arts and Sciences	70,127	-23.0%	87,553	-5.1%
Engineering and Applied Sciences	5,466	-5.4%	5,466	-5.4%
Business	14,123	-37.1%	14,150	-37.0%
Design	1,605	-13.7%	1,605	-13.7%
Divinity	1,019	-25.7%	1,019	-25.7%
Education*	1,717	-16.1%	1,847	-9.8%
Government	2,232	-17.0%	2,232	-17.0%
Law	6,242	-29.5%	7,217	-20.8%
Radcliffe*	1,629	-16.2%	1,629	-16.2%
Public Health*	12,227	-18.6%	12,231	-18.6%
Medical School (Including Dental)*	53,465	-3.4%	58,700	-6.1%
HRES/UOS/Others ⁽²⁾	52,991	-25.6%	59,908	-18.1%
TOTAL - North America Campus only	222,843	-20.3%	253,556	-10.4%

The 2010 Harvard University Greenhouse Gas Inventory represents the full breadth of the University's GHG footprint in North America. The inventory covers more than 26 million square feet of space and reports on all of the critical Kyoto protocol gases from both direct (Scope 1) and indirect (Scope 2) sources.

Harvard's emissions are reported annually in two ways, 1) FY06 vs. FY10 for just our Baseline Buildings (e.g., Buildings that have remained constant since FY 2006) and 2) FY06 vs. FY10 for the Total Campus (including any growth in square footage or usage).

The data in the table indicate a 10.4% decline in Harvard's overall GHG Emissions since Fiscal Year 2006, including growth, from a Fiscal Year 2006 baseline, with a 20.3% decline in emissions if growth is excluded.

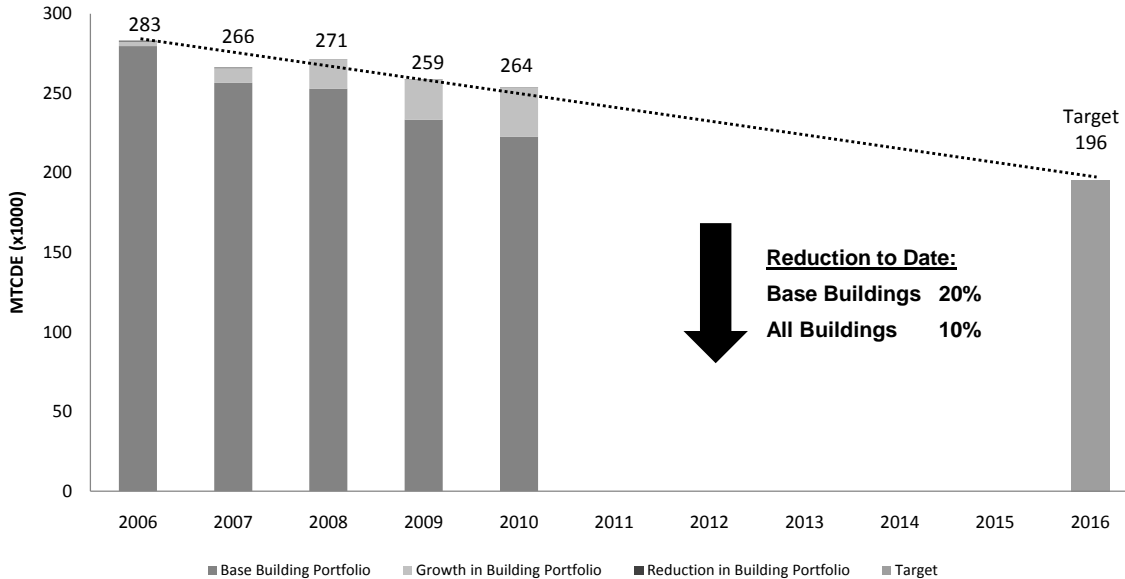
Adjustments to these emissions associated with Harvard's use of biofuels, biomass, Carbon uptake associated with the 3,500 acre Harvard Forest and Renewable Energy Certificates have not been made.

Additional GHG Inventory Reporting information can be found at www.green.harvard.edu/reporting.

* Schools include buildings that are not on the central utility plant and therefore do not see the benefits of emissions reductions associated with central utilities.

Harvard University Greenhouse Gas Emissions: FY2006 - FY2010 ⁽³⁾

Expressed in thousands of MTCDE



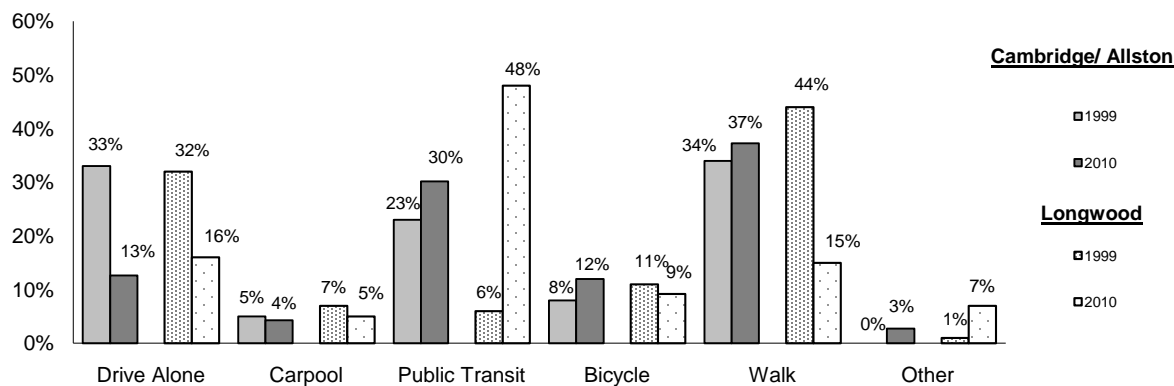
(1) MTCDE: Metric Tons of Carbon Dioxide Equivalent.

(2) HRES refers to Harvard Real Estate Services and UOS refers to University Operations Services.

(3) Emission for FY2006 through FY2009 have been restated based on the new methodology being followed. All North America Campuses are included.

SOURCE: HARVARD OFFICE FOR SUSTAINABILITY AND ENVIRONMENTAL HEALTH AND SAFETY

Commute Trends: FY1999 - FY2010



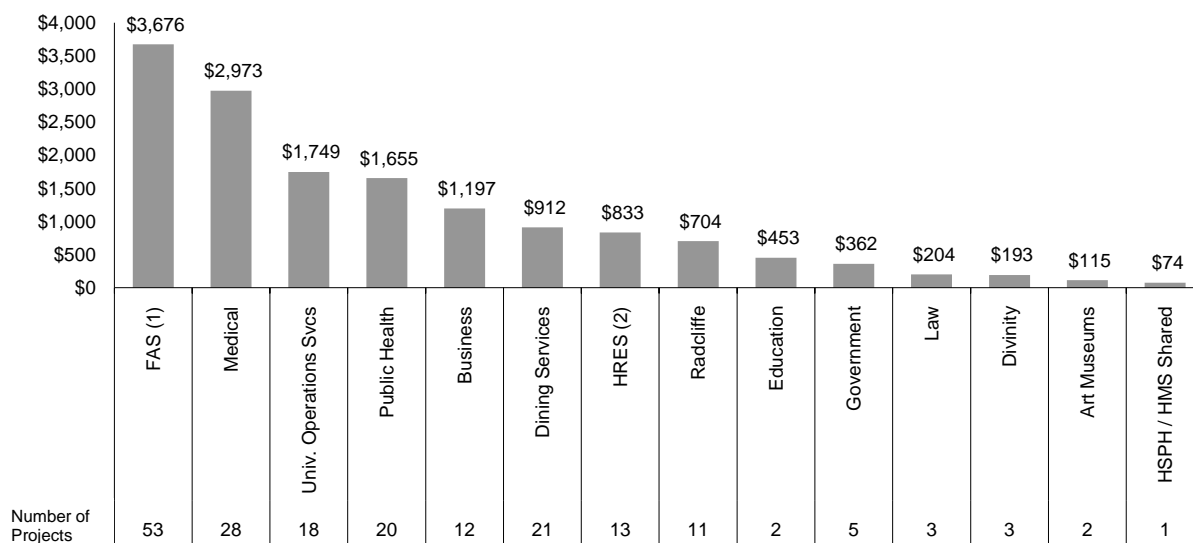
Cambridge Commute Type data is from UOS, Transportation Services Department.
 Longwood Commute Data is from the Harvard Medical School Parking Office.

Green Campus Loan Fund: FY2003 - FY2010

The Green Loan Fund is a revolving \$12 million fund that provides capital for high performance campus design, operations, maintenance and occupant behavior projects. Project eligibility guidelines state that projects must reduce the University's environmental impacts and meet specific payback requirements. Additional information can be found at green.harvard.edu/loan-fund.

Total Amount Loaned per Faculty: FY2002 - FY2010*

Expressed in thousands of dollars



* Total amount loaned FY2002 - FY2010 is \$15,098,485. This number includes all open, pending and closed loans.

(1) FAS refers to Faculty of Arts and Sciences.

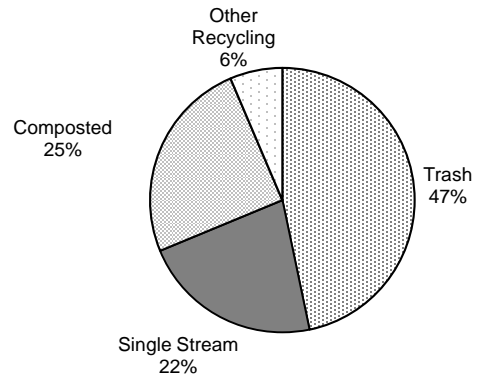
(2) HRES refers to Harvard Real Estate Services.

SOURCE: HARVARD OFFICE FOR SUSTAINABILITY

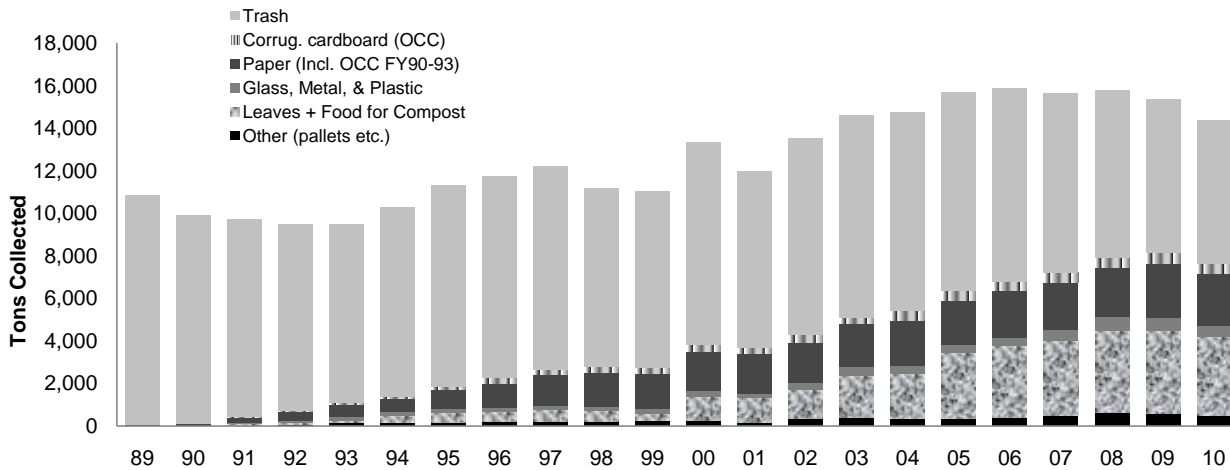
Waste and Recycling: FY2010

	Recycling Rate	Trash (in tons)
Faculty of Arts and Sciences	52%	2,396
SEAS ⁽¹⁾	67%	40
Business	62%	255
Design	69%	54
Divinity	70%	12
Education	63%	34
Government	34%	179
Law	52%	208
Radcliffe	57%	70
Medical	52%	947
Public Health & Dental	58%	253
HRES ⁽²⁾	59%	272
Libraries	64%	72
Museums	80%	13
Other: UOS, UIS, HU Press	55%	590
Average Recycling Rate	54%	

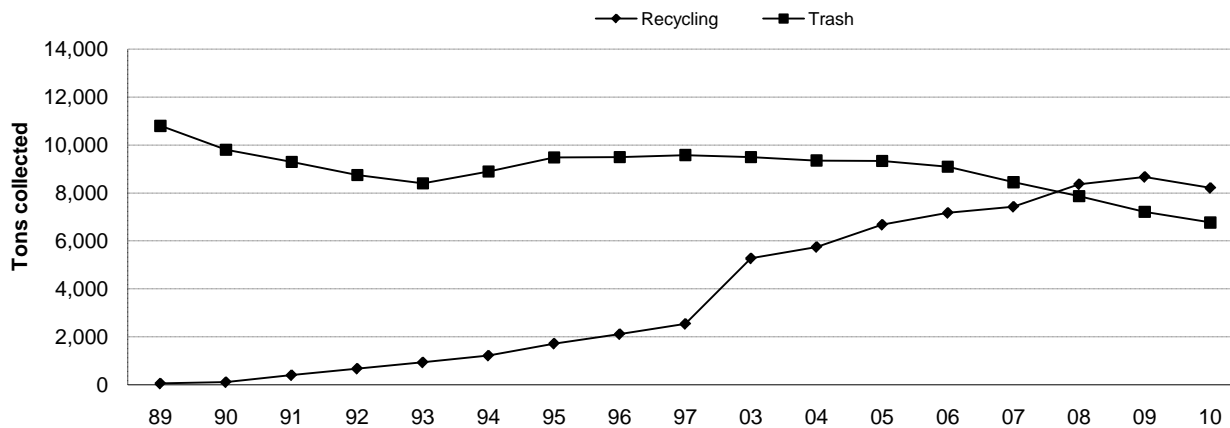
Harvard University Refuse: FY2010



Harvard University Refuse: FY1989 - FY2010



Harvard University Trash and Recycling: FY1989 - FY2010



(1) SEAS refers to Engineering and Applied Sciences.

(2) Harvard Real Estate Services recycling/trash data collected for University and Commercial Real Estate only. Does not include Residential Real Estate properties.

SOURCE: HARVARD OFFICE FOR SUSTAINABILITY AND UNIVERSITY OPERATIONS SERVICES

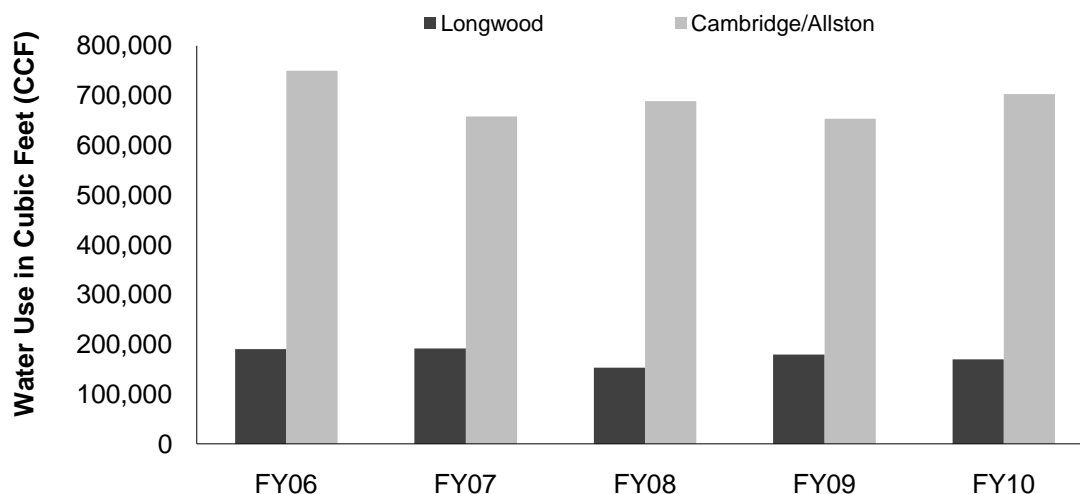
Solid Waste and Recycling data for Cambridge and Allston was reported by UOS, Solid Waste and Recycling Department.

Solid Waste and Recycling data for the Longwood campus was reported by the HMS and HSPH Operations Departments.

Water Use in Cubic Feet (CCF): FY2010

	Water Use (CCF)	Per 1,000 Sq Ft	% Change Total Water Use (CCF) FY09-10
Arts and Sciences	237,362	25	1%
Engineering and Applied Sciences	4,034	12	-10%
Business	73,986	48	9%
Design	1,594	9	6%
Divinity	2,623	14	-15%
Education	3,093	12	-12%
Government	9,442	36	7%
Law	18,707	16	-11%
Radcliffe	2,845	16	-2%
Medical (including Dental)	144,402	54	-10%
Public Health	25,612	32	33%
Harvard Real Estate Services	209,000	n/a	-2%
Other	139,821	n/a	54%
TOTAL	872,521	n/a	5%

Water Use: FY2006 - FY2010



Cambridge & Allston data is from the University Operations Services Utility Reports.

Harvard Medical School and Dental School data is reported by HMS Facilities Operations.

Harvard School of Public Health data is reported by HSPH Facilities Operations.

SOURCE: HARVARD OFFICE FOR SUSTAINABILITY AND UNIVERSITY OPERATIONS SERVICES

Leadership in Energy and Environmental Design (LEED) Projects as of FY2010

LEED is a rating system for green buildings and provides a nationally accepted third-party verification that a

building project meets the highest performance standards.

LEED Certified: The project has been third-party certified to meet the US Green Building Council LEED Standards.

LEED Registered: The project has registered for LEED Certification, but is not yet verified.

As of June 30, 2010, Harvard had 28 projects certified (10 since end of FY09) and 50 registered projects.

As of March 08, 2011, there have been 17 new LEED certifications and 9 new registrations in FY11.

Registered LEED Projects by School/Department

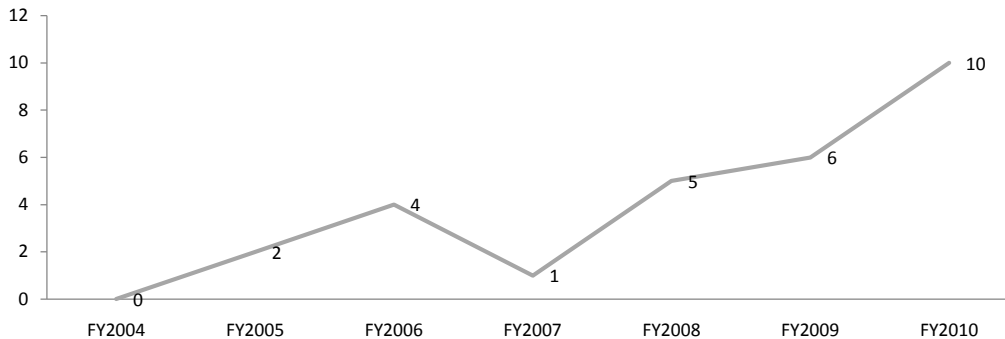
Project Type	Gross Sq Footage
Arts and Sciences	
Child Care	7,000
Dormitory	57,869
Laboratory	181,557
Labs/Office	1,700
Locker Room/Office	5,150
Museum	1,497
Office	22,610
Engineering and Applied Sciences	
Laboratory	31,280
Office	2,003
Allston	
Labs/Office	1,100,000
Arnold Arboretum	
Labs/Office	43,500
Art Museum	
Museum	132,310
Storage	66,101
Business	
Classroom	4,947
Gymnasium	118,600
Education	
Classroom	17,080
Government	
Classroom	2,928
Library	9,762
Office	6,019
Harvard Management Company	
Office	66,101
Law	
Classroom/Office	518,783
Dormitory	56,542
Library	
Library	126,899
Medical	
Laboratory	40,427
Office	43,900
Public Health	
Office	2,387
Radcliffe	
Office	42,732
Total	2,709,684

Certified LEED Projects

Italics = New in FY10

Project Name	Building Type	Level	Gross Sq Footage
Arts and Sciences			
<i>Littauer Fine Arts Library</i>	<i>Library</i>	<i>Gold</i>	<i>23,300</i>
<i>Holyoke Center 4th Floor</i>	<i>Office</i>	<i>Gold</i>	<i>7,731</i>
<i>Jacobsen Lab</i>	<i>Lab</i>	<i>Gold</i>	<i>5,910</i>
<i>Zhuang Lab</i>	<i>Lab</i>	<i>Gold</i>	<i>3,435</i>
<i>Schreiber Lab</i>	<i>Lab</i>	<i>Gold</i>	<i>1,700</i>
Business			
Aldrich Hall	Classroom	Silver	102,825
Gallatin Hall	Housing	Gold	48,218
Hamilton Hall	Housing	Gold	48,194
<i>McCulloch Hall</i>	<i>Housing</i>	<i>Platinum</i>	<i>35,127</i>
McCollum Hall	Classroom	Gold	8,165
<i>Class of 1959 Memorial Chapel</i>	<i>Mixed Use</i>	<i>Gold</i>	<i>6,932</i>
Wyss Hall	Office	Gold	6,155
Education			
Mather Dunster	Kitchen/Servery	Silver	15,870
Divinity			
<i>Rockefeller Hall</i>	<i>Mixed Use</i>	<i>Gold</i>	<i>26,715</i>
Harvard Credit Union			
<i>Credit Union - 104 Mt. Auburn</i>	<i>Office</i>	<i>Silver</i>	<i>6,826</i>
Harvard Real Estate Services/University Information Systems			
60 Oxford Street	IT	Certified	93,923
Harvard Real Estate Services			
One Western Avenue	Housing	Silver	229,000
5 Cowperthwaite Street	Housing	Gold	208,343
10 Akron Street	Housing	Gold	106,569
Zero Arrow Street	Theater/Office	Certified	40,012
90 Mount Auburn Street	Library	Gold	30,405
2 Grant Street	Housing	Platinum	1,000
Law			
125 Mt. Auburn, 2nd Fl.	Office	Silver	10,276
Griswold	Office	Platinum	2,078
Medical			
<i>Depace Lab</i>	<i>Lab</i>	<i>Gold</i>	<i>1,800</i>
Public Health			
Landmark Center	Mixed Use	Certified	42,000
Radcliffe			
Schlesinger Library	Library	Certified	25,988
University Operations Services			
Blackstone South	Office	Platinum	40,000
Total			1,178,497
Total Registered and Certified LEED			3,888,181

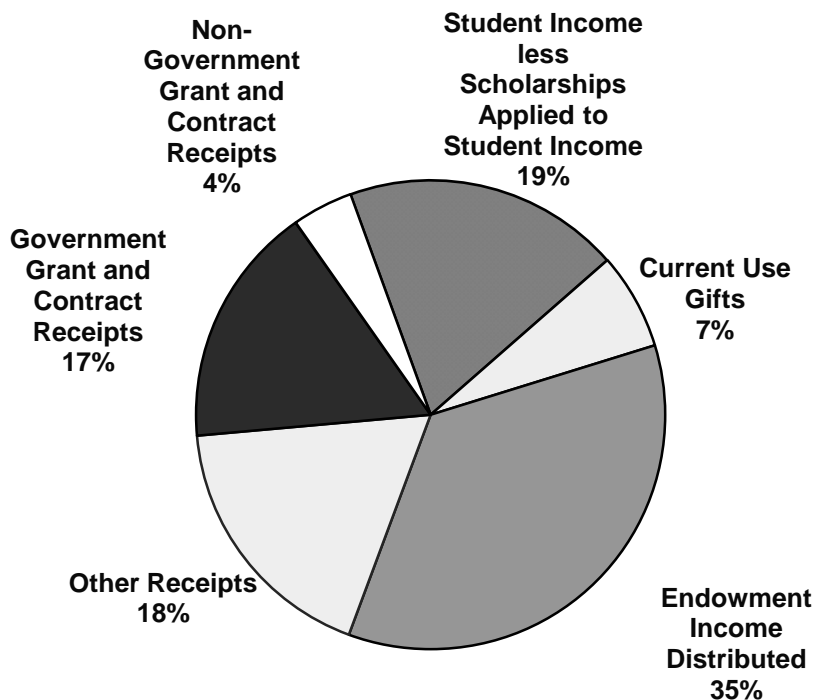
Harvard LEED Certified Projects: FY2004 - FY2010



SOURCE: HARVARD OFFICE FOR SUSTAINABILITY

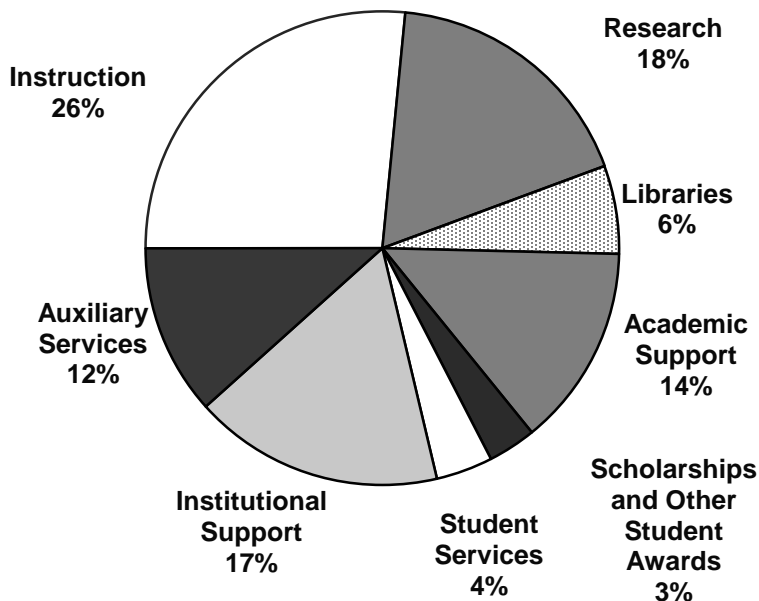
Total University Income and Expenses for Fiscal Year Ended June 30, 2010
Expressed in thousands of dollars

Total Income: \$3,724,833



Total Expenses: \$3,729,582

(scholarship item excludes \$318.9 million in scholarships applied to student income)



SOURCE: HARVARD UNIVERSITY FINANCIAL REPORT

Departmental Operating Expenses Year Ended June 30, 2010

Expressed in thousands of dollars

	Salaries and Wages	Employee Benefits	Scholarships/ Student Awards
Faculty of Arts and Sciences			
Faculty of Arts and Sciences	\$346,728	\$103,190	\$230,787
Division of Continuing Education	25,779	6,492	9,765
FAS Museums	11,279	4,613	1,843
Total Faculty of Arts and Sciences	\$383,786	\$114,295	\$242,395
Engineering and Applied Sciences	\$37,556	\$9,785	\$8,390
Business	156,602	45,968	34,308
Dental	12,847	4,440	1,817
Design	15,596	4,585	9,716
Divinity	14,138	4,469	9,257
Education	35,708	11,458	11,742
Government	61,020	20,281	21,399
Law	66,688	20,443	22,200
Medical	174,645	58,846	53,137
Radcliffe	6,910	2,641	2,617
Public Health	95,957	31,679	17,869
Other Faculties Subtotal	\$677,667	\$214,595	\$192,452
Total Faculties	\$1,061,453	\$328,890	\$434,847
Arnold Arboretum	4,495	1,793	144
Harvard University Art Museums	10,544	4,183	22
Joint Center for Housing Studies	927	359	73
Nieman Foundation	1,398	581	1,545
Villa I Tatti	3,358	1,129	1,291
Other Academic Departments Subtotal	\$20,722	\$8,045	\$3,075
Service Departments	\$117,338	\$45,694	\$833
Memorial Church	\$1,141	\$409	-
Central Administration ⁽²⁾	\$162,694	\$43,086	\$2,177
TOTAL UNIVERSITY EXPENSES	\$1,363,348	\$426,124	\$440,932

(1) Includes expense credits and transfers.

(2) Includes Harvard University Library and other University funds.

SOURCE: OFFICE OF THE CONTROLLER

Less: Financial Aid Applied against Income	Equipment and Supplies	Space and Occupancy	Depreciation	Other Expenses ⁽¹⁾	Total Expenses
(\$181,135)	\$51,752	\$165,483	\$106,353	\$121,859	\$945,017
(9,507)	1,420	3,301	924	17,217	55,391
(355)	2,478	3,362	1,244	6,359	30,823
(\$190,997)	\$55,650	\$172,146	\$108,521	\$145,435	\$1,031,231
(\$6,042)	\$5,691	\$8,197	\$8,611	\$11,625	83,813
(27,523)	8,727	31,588	27,437	129,298	406,405
(1,470)	3,062	3,811	1,918	6,861	33,286
(8,460)	1,444	3,095	756	7,738	34,470
(7,614)	723	2,593	1,636	3,985	29,187
(9,398)	2,264	6,582	795	20,628	79,779
(15,361)	5,730	12,978	3,004	26,081	135,132
(16,650)	5,385	16,581	5,874	26,973	147,494
(25,769)	42,325	78,462	46,520	157,476	585,642
(15)	367	1,743	2,047	2,936	19,246
(9,520)	21,038	27,843	6,910	136,320	328,096
(\$127,822)	\$96,756	\$193,473	\$105,508	\$529,921	\$1,882,550
(\$318,819)	\$152,406	\$365,619	\$214,029	\$675,356	\$2,913,781
(12)	496	1,263	331	2,380	10,890
-	3,202	4,912	1,930	4,844	29,637
-	22	163	-	382	1,926
-	84	291	39	1,079	5,017
-	908	912	369	2,069	10,036
(\$12)	\$4,712	\$7,541	\$2,669	\$10,754	\$57,506
-	\$48,861	(\$40,176)	\$14,653	\$17,530	\$204,733
-	\$62	\$719	\$71	\$393	\$2,795
(\$80)	\$11,708	\$121,240	\$46,938	\$163,004	\$550,767
(\$318,911)	\$217,749	\$454,943	\$278,360	\$867,037	\$3,729,582

Market Value of Endowment Funds as of June 30, 2010

Expressed in millions of dollars, in descending order

	Endowment Market Value	Market Value % of Total
Arts and Sciences ⁽¹⁾	\$11,645	42.3%
Medical	3,320	12.0%
Business	2,308	8.4%
Other Departments	2,330	8.5%
President's Funds	1,830	6.6%
Law	1,426	5.2%
Public Health	967	3.5%
Government ⁽²⁾	858	3.1%
Engineering and Applied Sciences	768	2.8%
Divinity	481	1.7%
Radcliffe Institute for Advanced Study	465	1.7%
Education	417	1.5%
Design	326	1.2%
Central Administration	251	0.9%
Dental	165	0.6%
Total Endowment	\$27,557	100%

(1) Arts and Sciences includes: Continuing Education, College Library, FAS Museums, GSAS, Athletics, College Life and Student Services, and Dumbarton Oaks.

(2) Government includes Institute of Politics.

SOURCE: HARVARD ANNUAL FINANCIAL REPORT

Endowment Performance: FY 1980 - FY 2010

Fiscal Year	Market Value at End of Year (in 000's)	Return ⁽¹⁾	Spending Rate ⁽²⁾	Endowment Income as % of University Operating Revenue
1980	1,491,059	15.9%	5.4%	19.4%
1981	1,622,734	11.2%	5.2%	18.4%
1982	1,617,290	0.0%	5.1%	19.1%
1983	2,307,437	43.6%	5.8%	19.4%
1984	2,187,884	-3.8%	4.3%	19.0%
1985	2,694,802	26.8%	4.9%	18.1%
1986	3,435,006	31.3%	4.3%	17.5%
1987	4,018,269	19.9%	3.6%	17.1%
1988	4,155,778	5.7%	3.3%	17.2%
1989	4,478,976	12.8%	3.9%	18.9%
1990	4,760,284	7.5%	3.8%	17.9%
1991	4,708,407	1.1%	4.2%	18.1%
1992	5,118,118	11.8%	4.5%	18.4%
1993	5,778,257	16.8%	4.8%	19.9%
1994	6,201,220	9.8%	4.5%	20.6%
1995	7,045,863	16.8%	4.6%	20.9%
1996	9,117,945	26.0%	4.3%	20.5%
1997	11,161,761	25.8%	4.1%	21.2%
1998	13,278,938	20.5%	3.7%	23.5%
1999	14,535,675	12.2%	3.3%	23.5%
2000	19,148,288	32.2%	4.0%	27.5%
2001	18,259,199	-2.7%	3.3%	27.6%
2002	17,518,021	-0.5%	4.8%	31.9%
2003	19,294,735	12.5%	5.2%	31.2%
2004	22,587,305	21.1%	4.9%	31.1%
2005	25,853,048	19.2%	4.5%	30.5%
2006	29,219,430	16.7%	4.2%	31.1%
2007	34,912,100	23.0%	4.6%	32.5%
2008	36,926,693	8.6%	4.8%	34.5%
2009 ⁽³⁾	26,138,239	-27.3%	4.5%	37.2%
2010	\$27,557,404	11.0%	6.1%	35.5%

Compound Annual Growth Rates and Average Rates of Return

30 YEAR	10.2%	13.7%
20 YEAR	9.2%	12.7%
10 YEAR	3.7%	8.2%
5 YEAR	1.3%	6.4%
1 YEAR	5.4%	-

(1) This is the total return percentage reported by the Harvard Management Company.

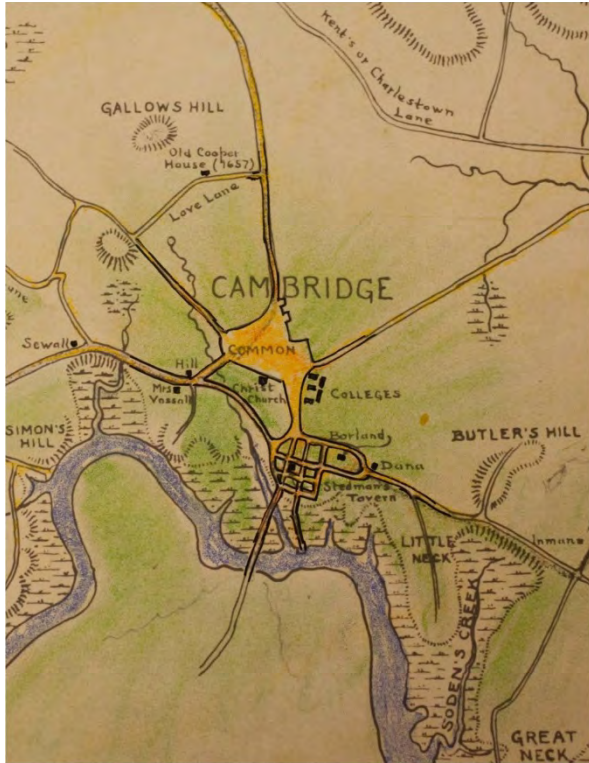
It is calculated based on reinvestment of all earnings on a monthly basis.

(2) Prior to FY04: Spending rate based upon the per unit distribution rate established by the Corporation for each fiscal year.

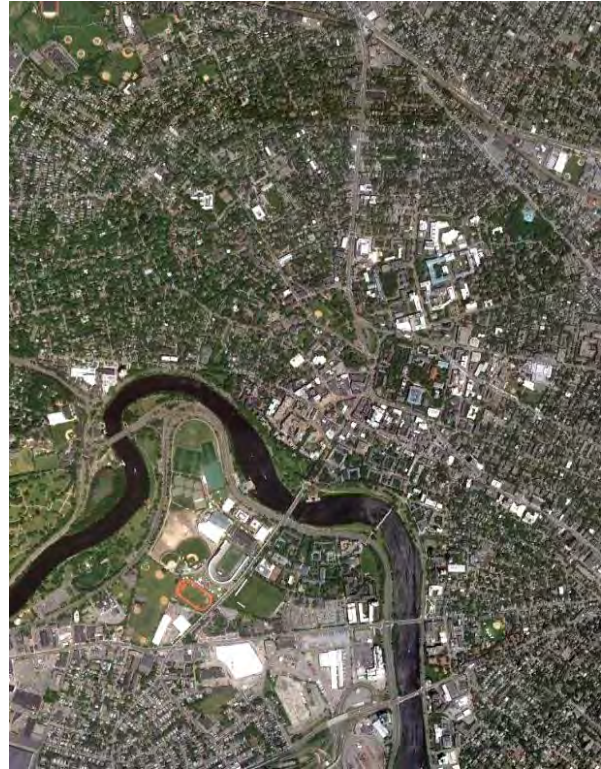
Starting with FY04: Spending rate based upon actual endowment distributions in combination with approved decapitalizations of endowment principal made during the fiscal year.

(3) Values have been recast to conform with the Fiscal Year 2010 Annual Financial Report

SOURCE: ANNUAL FINANCIAL REPORT AND INTERNAL REPORTS



Stephanie Mitchell/Harvard Staff Photographer



© Google 2010

About the Cover:

The cover is a detail from an image of a historic map of Cambridge, the Charles River, and the Harvard campus. The map is from Harvard University Archives. On the right is a Google Earth image of approximately the same location, as of 2010.

About Harvard:

Harvard University is the oldest institution of higher learning in the United States. It was established in 1636 by vote of the Great and General Court of the Massachusetts Bay Colony and was named for its first benefactor, John Harvard of Charlestown, Massachusetts. Upon his death in 1638, the young minister left his library and half his estate to the new College. Founded 16 years after the arrival of the Pilgrims at Plymouth, the College has grown from nine students with a single master to an enrollment of more than 20,000 degree candidates.